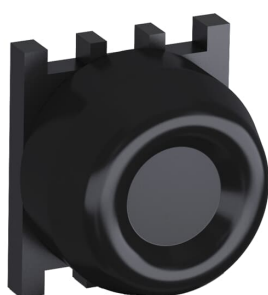

PRODUCT-DETAILS

KP6-40B-20

KP6-40B-20 Heavy Duty Pushbutton



General Information

Extended Product Type	KP6-40B-20
Product ID	1SFA616105R4026
EAN	7320500200513
Catalog Description	KP6-40B-20 Heavy Duty Pushbutton
Long Description	Modular Heavy Duty Pushbutton - Momentary - Heavy duty rubber - Black - Non-illuminated - 2NO

Ordering

E-Number (Sweden)	3705084
EAN	7320500200513
Minimum Order Quantity	10 piece
Customs Tariff Number	8536501999

Dimensions

Product Net Width	0.043 m
Product Net Height	0.043 m
Product Net Depth / Length	0.045 m
Product Net Weight	0.043 kg

Container Information

Package Level 1 Units	bag 1 piece
Package Level 1 Width	0.1 m
Package Level 1 Height	0.043 m
Package Level 1 Depth / Length	0.1 m
Package Level 1 Gross Weight	0.043 kg
Package Level 1 EAN	7320500200513

Environmental

RoHS Status	Following EU Directive 2015/863 July 22, 2019 (RoHS 3)
-------------	--

Additional Information

Actuator Type	Heavy duty rubber
Bezel Material	Black Plastic
Block	2NO
Color	Black
Degree of Protection	Front IP66
Function	Momentary
Illumination	Non-illuminated
Mechanical Durability	2 million
Number of Auxiliary Contacts NO	2
Product Main Type	KP6
Product Name	Heavy Duty Pushbutton
Product Range	Modular
Product Type	KP
Ratio	2
RoHS Date	0626 5

Certificates and Declarations (Document Number)

Data Sheet, Technical Information	1SFC151007C02__
Declaration of Conformity - CE	2CMT2015-005453
Environmental Information	1SFC151001D0201
Instructions and Manuals	1SFC151011M0201
RoHS Information	2CMT2015-005453

Classifications

ETIM 4	EC002024 - Accessories for control circuit devices
ETIM 5	EC000221 - Front element for push button
ETIM 6	EC000221 - Front element for push button
ETIM 7	EC001028 - Push button, complete
Object Classification Code	S
WEEE Category	5. Small Equipment (No External Dimension More Than 50 cm)

Categories

Low Voltage Products and Systems → Control Products → Pilot Devices → Modular Plastic Range

