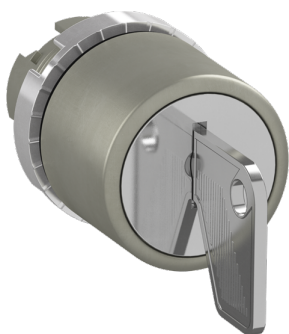


PRODUCT-DETAILS

P9MSCI0E95

SELECTOR SWITCH P9MSCI0E95



General Information

Extended Product Type	P9MSCI0E95
Product ID	1SFA184404R9006
EAN	7320500521731
Catalog Description	SELECTOR SWITCH P9MSCI0E95
Long Description	KEY-OPERATED SELECTOR SWITCH 2-POS MAINTAINED

Ordering

EAN	7320500521731
Minimum Order Quantity	10 piece
Customs Tariff Number	8536501990

Dimensions

Product Net Width	29.7 mm
Product Net Height	44.5 mm
Product Net Depth / Length	68.4 mm
Product Net Weight	0.12 kg

Container Information

Package Level 1 Units	box 1 piece
-----------------------	-------------

Package Level 1 Width	41 mm
Package Level 1 Height	41 mm
Package Level 1 Depth / Length	113 mm
Package Level 1 Gross Weight	0.12 kg
Package Level 1 EAN	7320500519882
Package Level 2 Units	box 10 piece
Package Level 2 Width	90 mm
Package Level 2 Height	120 mm
Package Level 2 Depth / Length	220 mm

Environmental

RoHS Status	Following EU Directive 2015/863 July 22, 2019 (RoHS 3)
-------------	--

Additional Information

Actuator Type	Key
Bezel Material	Satin Chrome Metal
Color	Black/Key=metal
Degree of Protection	Front IP66
Function	Maintained
Illumination	Non-illuminated
Key Code	Key code 95
Key Removal Positions	Position B Only
Maintained Positions	B, C
Product Main Type	P9MSC
Product Name	Key Operated Selector Switch
Sub-Function	2-position
Sub-Function 2	CAM I

Certificates and Declarations (Document Number)

BV Certificate	2CMT2019-005867
CB Certificate	2CMT2019-005872
CCC Certificate	2CMT2019-005869
CSA Certificate	2CMT2019-005868
Data Sheet, Technical Information	1SFC151007C02__
Declaration of Conformity - CE	2CMT2019-005862
DNV GL Certificate	2CMT2019-005876
Instructions and Manuals	1SFC151011M0201
RINA Certificate	2CMT2019-005866
RoHS Information	2CMT2019-005862
UL Certificate	2CMT2019-005868

Classifications

ETIM 7	EC000222 - Front element for selector switch
WEEE Category	5. Small Equipment (No External Dimension More Than 50 cm)

Categories

Low Voltage Products and Systems → Control Products → Pilot Devices → Modular Metal Range P9M

