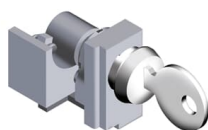


PRODUCT-DETAILS

# MOL-S XT5-XT6 KE.LO. RONIS EQ.A 1228xMOE

## MOL-S XT5-XT6 KE.LO. RONIS EQ.A 1228xMOE



### General Information

Extended Product Type	MOL-S XT5-XT6 KE.LO. RONIS EQ.A 1228xMOE
Product ID	1SDA105094R1
EAN	8015644071868
Catalog Description	MOL-S XT5-XT6 KE.LO. RONIS EQ.A 1228xMOE
Long Description	KEY LOCK RONIS EQUAL FELLOW A 1228 FOR MOTOR OPERATOR BETWEEN MORE C.BREAKERS XT5-XT6

### Ordering

EAN	8015644071868
Minimum Order Quantity	1 piece
Customs Tariff Number	85389099

### Dimensions

Product Net Width	145 mm
Product Net Height	30 mm
Product Net Depth / Length	250 mm
Product Net Weight	0.08 kg

### Container Information

Package Level 1 Units	1 piece
Package Level 1 Width	145 mm
Package Level 1 Height	30 mm
Package Level 1 Depth / Length	250 mm
Package Level 1 Gross Weight	0.08 kg
Package Level 1 EAN	8015644071868

### Additional Information

Configuration Type	Loose or configurable
Order Multiple	1 piece
Product Main Type	Accessories for Tmax XT
Product Name	Accessory
Product Type	ACC
Standards	IEC, UL
Suitable For	XT5 XT6
Suitable for Product Class	SACE Tamx XT

### Certificates and Declarations (Document Number)

Data Sheet, Technical Information	1SDC210100D0205 1SDC210200D0205
Instructions and Manuals	2TFH000035A1001

### Classifications

ETIM 6	EC002498 - Accessories for low-voltage switch technology
ETIM 7	EC002498 - Accessories for low-voltage switch technology
WEEE Category	5. Small Equipment (No External Dimension More Than 50 cm)

### Categories

Low Voltage Products and Systems → Circuit Breakers → Moulded Case Circuit Breakers → Accessories for Tmax XT

