

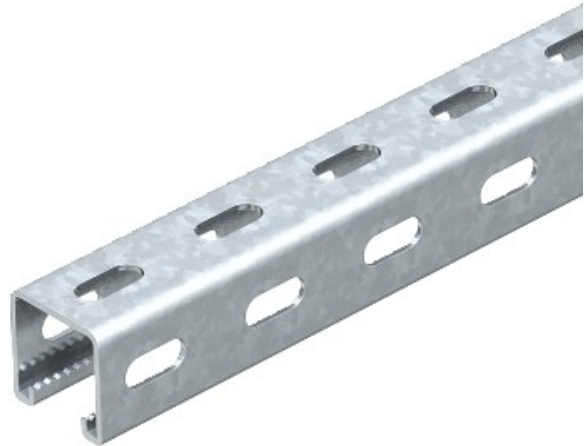


Electric Automation
Automation specialists

Riferimento: MS 41 LS 6M 2 FS
Codice: 1123012

perfor Profilo., larghezza 22mm Slot,
6000x41x41, banda zincato, DIN EN
10147, acciaio, St

Acquista da Electric Automation Network



Valori statici:

$A = 2,44837 \text{ cm}^2$

$I_y = 5,17636 \text{ cm}^4$

$I_z = 7,556 \text{ cm}^4$

$W_y = 2,51257 \text{ cm}^3$

$W_z = 2,68608 \text{ cm}^3$