

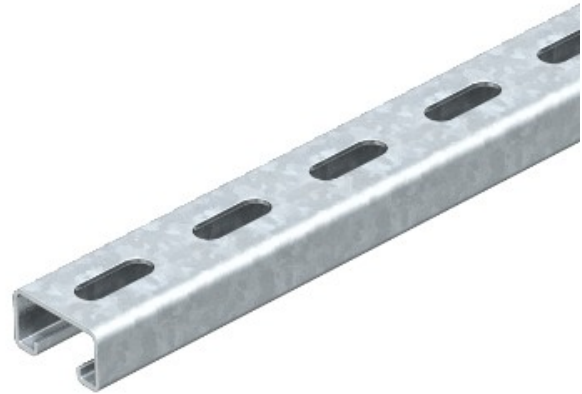


**Electric Automation**  
Automation specialists

Référence: MS 21 L 600 FT  
Code: 1122937

perfor Profil., slot largeur 22mm,  
600x41x21, galvanisé à chaud, DIN EN  
ISO 1461 acier St

Achat de Electric Automation Network



Les valeurs statiques:

$A = 1,64837 \text{ cm}^2$

$I_y = 0,952339 \text{ cm}^4$

$I_z = 4,5113 \text{ cm}^4$

$W_y = 0,888299 \text{ cm}^2$

$Z_m = 2,20087 \text{ cm}^3$