

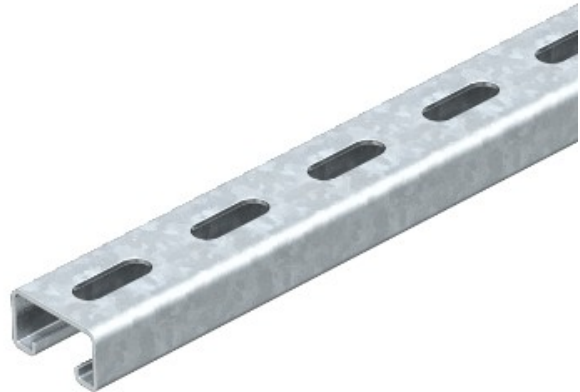


Electric Automation
Automation specialists

Référence: MS 21 L 6M FS
Code: 1122922

perfor Profil., slot largeur 22mm,
6000x41x21, bande galvanisée, DIN EN
10147, acier, St

Achat de Electric Automation Network



Les valeurs statiques:

$A = 1,64837 \text{ cm}^2$

$I_y = 0,952339 \text{ cm}^4$

$I_z = 4,5113 \text{ cm}^4$

$W_y = 0,888299 \text{ cm}^3$

$Z_m = 2,20087 \text{ cm}^3$