



**Automatización Eléctrica**  
Especialistas en Automatización

At the end of this document you will find links to products related to this catalog. You can go directly to our shop by clicking [HERE](#)

## Relay modules

### PLC series

#### PLC-INTERFACE with an integrated solid-state relay

The slim 6.2 mm PLC housing with integrated electronics in various versions offers the following advantages:

- Option of bridging adjacent modules
- Status display
- Protection circuits in input and output
- Wear-resistant and bounce-free switching
- Integrated protection circuit
- DC outputs of up to 300 V DC/1 A or up to 24 V DC/10 A
- Electronic PDT output of up to 48 V DC/500 mA
- Screw, spring-cage, and push-in technology

#### Notes:

Type of housing:  
Polyester FBT non-reinforced, color: green.

Marking systems and mounting material  
See Catalog 5

For the protection of input and output, inductive loads must be dampened with an effective protection circuit.

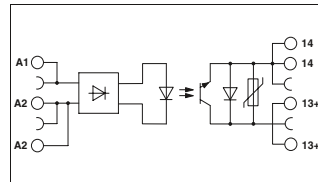
Separating plate PLC-ATP is to be used in the following cases: always at the start and end of a PLC terminal strip, for voltages greater than 250 V (L1, L2, L3) between the same terminal points of neighboring modules (potential bridging then takes place with FBST 8-PLC... or FBST 500...) and with safe isolation between neighboring modules.

The housings of the following modules are open on one side:  
- PLC-OS...-300DC/1  
- PLC-OS...-24DC/24DC/10R

1) EMC: Class A product, see page 571



Power solid-state relay with DC voltage output, max. 1 A



#### Technical data

Input data	①	②	③	④	⑤	⑥	⑦	⑧
Permissible range (with reference to $U_N$ )	0.8 - 1.2	0.8 - 1.2	0.8 - 1.2	0.8 - 1.2	0.8 - 1.2	0.8 - 1.1	0.8 - 1.1	0.8 - 1.1
Switching level (with reference to $U_N$ )	1 signal ("H") 0 signal ("L")	$\geq 0.8$ $\leq 0.4$	$\geq 0.8$ $\leq 0.4$	$\geq 0.8$ $\leq 0.4$	$\geq 0.8$ $\leq 0.4$	$\geq 0.8$ $\leq 0.4$	$\geq 0.8$ $\leq 0.4$	$\geq 0.8$ $\leq 0.4$
Typ. input current at $U_N$	[mA]	15	6	8	5	3	5.6	8.4
Transmission frequency $f_{\text{max}}$	[Hz]	50	50	50	50	50	10	10
Alarm output		-/-						
Operating range		300 V DC / 12 V DC						
Output data		300 V DC / 12 V DC						
Max. / min. switching voltage		1 A (see derating curve)						
Limiting continuous current		< 500 mV						
Voltage drop at max. limiting continuous current								
General data		300 V						
Rated insulation voltage		4 kV / basic insulation						
Rated surge voltage		-25°C ... 60°C						
Ambient temperature (operation)		IEC 60664, EN 50178, IEC 62103						
Standards/regulations		0.14 - 2.5 mm <sup>2</sup> / 0.14 - 2.5 mm <sup>2</sup> / 26 - 14						
Connection data solid / stranded / AWG		6.2 mm / 80 mm / 86 mm						
Dimensions		W / H / D						

#### Ordering data

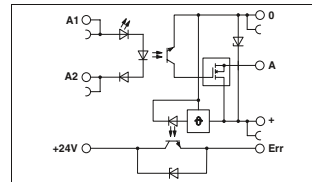
Description	Input voltage $U_N$	Type	Order No.	Pcs. / Pkt.	
PLC INTERFACE, with screw connection	① 5 V DC	PLC-OSC- 5DC/300DC/ 1)	2980652	10	
	② 12 V DC	PLC-OSC- 12DC/300DC/ 1)	2980655	10	
	③ 24 V DC	PLC-OSC- 24DC/300DC/ 1)	2980678	10	
	48 V DC ... 60 V DC	④ 60 V DC	PLC-OSC- 60DC/300DC/ 1)	2980681	10
		⑤ 110 V DC	PLC-OSC- 110DC/300DC/ 1)	2980694	10
		⑥ 220 V DC	PLC-OSC- 220DC/300DC/ 1)	2980704	10
		⑦ 120 V AC	PLC-OSC- 120AC/300DC/ 1)	2980717	10
		⑧ 230 V AC	PLC-OSC- 230AC/300DC/ 1)	2980720	10
	PLC INTERFACE, with spring-cage connection	① 5 V DC	PLC-OSP- 5DC/300DC/ 1)	2980814	10
② 12 V DC		PLC-OSP- 12DC/300DC/ 1)	2980827	10	
③ 24 V DC		PLC-OSP- 24DC/300DC/ 1)	2980830	10	
48 V DC ... 60 V DC		④ 60 V DC	PLC-OSP- 60DC/300DC/ 1)	2980843	10
		⑤ 110 V DC	PLC-OSP- 110DC/300DC/ 1)	2980856	10
		⑥ 220 V DC	PLC-OSP- 220DC/300DC/ 1)	2980869	10
		⑦ 120 V AC	PLC-OSP- 120AC/300DC/ 1)	2980872	10
		⑧ 230 V AC	PLC-OSP- 230AC/300DC/ 1)	2980885	10
PLC-INTERFACE, with push-in connection		① 5 V DC	PLC-OPT- 5DC/300DC/1)	2900381	10
	② 12 V DC	PLC-OPT- 12DC/300DC/1)	2900382	10	
	③ 24 V DC	PLC-OPT- 24DC/300DC/1)	2900383	10	
	48 V DC ... 60 V DC	④ 60 V DC	PLC-OPT- 60DC/300DC/1)	2900384	10
		⑤ 110 V DC	PLC-OPT- 110DC/300DC/1)	2900385	10
		⑥ 220 V DC	PLC-OPT- 220DC/300DC/1)	2900387	10
		⑦ 120 V AC	PLC-OPT- 120AC/300DC/1)	2900388	10
		⑧ 230 V AC	PLC-OPT- 230AC/300DC/1)	2900389	10

## Relay modules

### PLC series



Power solid-state relay with short-circuit-proof DC voltage output, max. 10 A, with feedback



#### Technical data

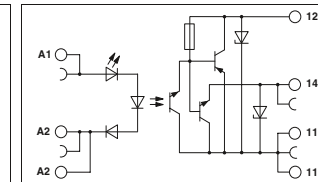
Input data	①
Permissible range (with reference to $U_N$ )	0.8 - 1.2
Switching level (with reference to $U_N$ )	$\geq 0.8$ $\leq 0.4$
Typ. input current at $U_N$	[mA]
Transmission frequency $f_{\text{max}}$	[Hz]
Alarm output	
Operating range	
Output data	
Max. / min. switching voltage	
Limiting continuous current	
Voltage drop at max. limiting continuous current	
General data	
Rated insulation voltage	300 V
Rated surge voltage	4 kV / basic insulation
Ambient temperature (operation)	-25°C ... 60°C
Standards/regulations	IEC 60664, EN 50178, IEC 62103
Connection data solid / stranded / AWG	0.14 - 2.5 mm <sup>2</sup> / 0.14 - 2.5 mm <sup>2</sup> / 26 - 14
Dimensions	6.2 mm / 80 mm / 86 mm

#### Ordering data

Type	Order No.	Pcs. / Pkt.
PLC-OSC- 24DC/ 24DC/ 10R/1)	2982702	10
PLC-OSP- 24DC/ 24DC/ 10R/1)	2982715	10
PLC-OPT- 24DC/ 24DC/ 10R/1)	2900398	10



Input solid-state relay with DC voltage output, max. 500 mA, with electronic PDT



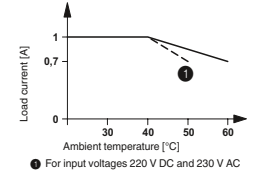
#### Technical data

Input data	①
Permissible range (with reference to $U_N$ )	0.8 - 1.2
Switching level (with reference to $U_N$ )	$\geq 0.8$ $\leq 0.4$
Typ. input current at $U_N$	[mA]
Transmission frequency $f_{\text{max}}$	[Hz]
Alarm output	
Operating range	
Output data	
Max. / min. switching voltage	
Limiting continuous current	
Voltage drop at max. limiting continuous current	
General data	
Rated insulation voltage	300 V
Rated surge voltage	4 kV / basic insulation
Ambient temperature (operation)	-25°C ... 60°C
Standards/regulations	IEC 60664, EN 50178, IEC 62103
Connection data solid / stranded / AWG	0.14 - 2.5 mm <sup>2</sup> / 0.14 - 2.5 mm <sup>2</sup> / 26 - 14
Dimensions	6.2 mm / 80 mm / 86 mm

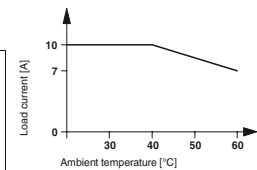
#### Ordering data

Type	Order No.	Pcs. / Pkt.
PLC-OSC- 24DC/ 48DC/ 500W/1)	2980636	10
PLC-OSP- 24DC/ 48DC/ 500W/1)	2980649	10
PLC-OPT- 24DC/ 48DC/ 500W/1)	2900378	10

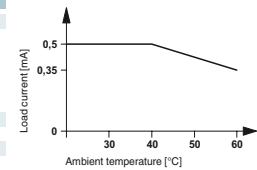
Derating curve for PLC...300DC/1



Derating curve for PLC...24DC/24DC/10R



Derating curve for PLC...24DC/48DC/500W



Below is a list of articles with direct links to our shop Electric Automation Network where you can see:

- Quote per purchase volume in real time.
- Online documentation and datasheets of all products.
- Estimated delivery time enquiry in real time.
- Logistics systems for the shipment of materials almost anywhere in the world.
- Purchasing management, order record and tracking of shipments.

To access the product, [click on the green button.](#)

Product	Code	Reference	Product link
PLC-INTERFACE, integrated solid-state relay, with spring-cage connection, for mounting on NS 35/7,5 DIN rails, input: 5 V DC, output: 12 - 300 V DC/1 A	2980814	PLC-OSP-5DC/300DC/ 1	<a href="#">Buy on EAN</a>
PLC-INTERFACE, integrated solid-state relay, with spring-cage connection, for mounting on NS 35/7,5 DIN rails, input: 12 V DC, output: 12 - 300 V DC/1 A	2980827	PLC-OSP-12DC/300DC/ 1	<a href="#">Buy on EAN</a>
PLC-INTERFACE, integrated solid-state relay, with spring-cage connection, for mounting on NS 35/7,5 DIN rails, input: 60 V DC, output: 12 - 300 V DC/1 A	2980843	PLC-OSP-60DC/300DC/ 1	<a href="#">Buy on EAN</a>
PLC-INTERFACE, integrated solid-state relay, with spring-cage connection, for mounting on NS 35/7,5 DIN rails, input: 110 V DC, output: 12 - 300 V DC/1 A	2980856	PLC-OSP-110DC/300DC/ 1	<a href="#">Buy on EAN</a>
PLC-INTERFACE, integrated solid-state relay, with spring-cage connection, for mounting on NS 35/7,5 DIN rails, input: 220 V DC, output: 12 - 300 V DC/1 A	2980869	PLC-OSP-220DC/300DC/ 1	<a href="#">Buy on EAN</a>
PLC-INTERFACE, integrated solid-state relay, with spring-cage connection, for mounting on NS 35/7,5 DIN rails, input: 120 V AC, output: 12 - 300 V DC/1 A	2980872	PLC-OSP-120AC/300DC/ 1	<a href="#">Buy on EAN</a>
PLC-INTERFACE, integrated solid-state relay, with spring-cage connection, for mounting on NS 35/7,5 DIN rails, input: 230 V AC, output: 12 - 300 V DC/1 A	2980885	PLC-OSP-230AC/300DC/ 1	<a href="#">Buy on EAN</a>