



**Automatización Eléctrica**  
Especialistas en Automatización

At the end of this document you will find links to products related to this catalog. You can go directly to our shop by clicking HERE. [HERE](#)

## Terminal box - E AB A 130X80X60 12MPT - 3001999

Please be informed that the data shown in this PDF Document is generated from our Online Catalog. Please find the complete data in the user's documentation. Our General Terms of Use for Downloads are valid (<http://phoenixcontact.com/download>)



Terminal box, With 12 terminal blocks, 2.5 mm<sup>2</sup> with push-in technology, Material: ABS, gray, 130 mm x 80 mm x 60 mm, Type of locking: Screw-on cover

### Why buy this product

- Terminal box with cover and pre-assembled terminal strip
- Fast wiring without the need for additional components

### Key Commercial Data

Packing unit	1 STK
GTIN	 4 055626 083834

### Technical data

#### General

Color	gray
Flammability rating according to UL 94	UL-94 HB

#### Dimensions

Width	130 mm
Height	80 mm
Depth	60 mm

#### General

Housing material	ABS
Cover fastening	Screw-on cover
Note	Phillips-Recess
Assembly instructions	Screw connection in housing base
Surface impact strength	2.00 J
Impact strength according to standard	EN 62262/EN 50102
Seal material	Silicon
Type of insulation	Full protective insulation
Components	Halogen-free

#### Ambient conditions

## Terminal box - E AB A 130X80X60 12MPT - 3001999

### Technical data

#### Ambient conditions

IP/NEMA protection class	IP67
Ambient temperature (operation)	-25 °C ... 60 °C

#### Standards and Regulations

Standards/regulations	EN 62262/EN 50102
Flammability rating according to UL 94	UL-94 HB

### Classifications

#### eCl@ss

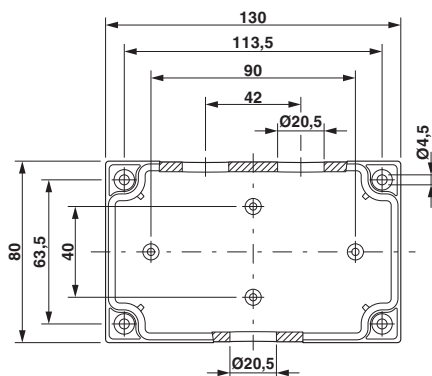
eCl@ss 5.1	27180502
eCl@ss 8.0	27144403

#### ETIM

ETIM 4.0	EC002713
ETIM 5.0	EC002713

### Drawings

Dimensional drawing



Below is a list of articles with direct links to our shop Electric Automation Network where you can see:

- Quote per purchase volume in real time.
- Online documentation and datasheets of all products.
- Estimated delivery time enquiry in real time.
- Logistics systems for the shipment of materials almost anywhere in the world.
- Purchasing management, order record and tracking of shipments.

To access the product, [click on the green button.](#)

Product	Code	Reference	Product link
Terminal box, With 12 terminal blocks, 2.5 mm <sup>2</sup> with push-in technology, Material: ABS, gray, 130 mm x 80 mm x 60 mm, Type of locking: Screw-on cover	3001999	E AB A 130X80X60 12MPT	<a href="#">Buy on EAN</a>