



Automatización Eléctrica
Especialistas en Automatización

At the end of this document you will find links to products related to this catalog. You can go directly to our shop by clicking HERE. [HERE](#)

Terminal box - E AB A 85X83X60 6MPT - 3001998

Please be informed that the data shown in this PDF Document is generated from our Online Catalog. Please find the complete data in the user's documentation. Our General Terms of Use for Downloads are valid (<http://phoenixcontact.com/download>)



Terminal box, With 6 terminal blocks, 2.5 mm² with push-in technology, Material: ABS, gray, 85 mm x 83 mm x 60 mm, Type of locking: Screw-on cover

Why buy this product

- Terminal box with cover and pre-assembled terminal strip
- Fast wiring without the need for additional components

Key Commercial Data

Packing unit	1 STK
GTIN	 4 055626 083827

Technical data

General

Color	gray
Flammability rating according to UL 94	UL-94 HB

Dimensions

Width	85 mm
Height	83 mm
Depth	60 mm

General

Housing material	ABS
Cover fastening	Screw-on cover
Note	Phillips-Recess
Assembly instructions	Screw connection in housing base
Surface impact strength	2.00 J
Impact strength according to standard	EN 62262/EN 50102
Seal material	Silicon
Type of insulation	Full protective insulation
Components	Halogen-free

Ambient conditions

Terminal box - E AB A 85X83X60 6MPT - 3001998

Technical data

Ambient conditions

IP/NEMA protection class	IP67
Ambient temperature (operation)	-25 °C ... 60 °C

Standards and Regulations

Standards/regulations	EN 62262/EN 50102
Flammability rating according to UL 94	UL-94 HB

Classifications

eCl@ss

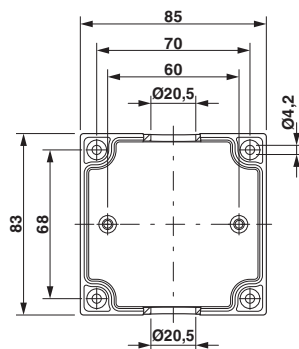
eCl@ss 5.1	27180502
eCl@ss 8.0	27144403

ETIM

ETIM 4.0	EC002713
ETIM 5.0	EC002713

Drawings

Dimensional drawing



Phoenix Contact 2016 © - all rights reserved
<http://www.phoenixcontact.com>

PHOENIX CONTACT GmbH & Co. KG
Flachsmarktstr. 8
32825 Blomberg
Germany
Tel. +49 5235 300
Fax +49 5235 3 41200
<http://www.phoenixcontact.com>

Below is a list of articles with direct links to our shop Electric Automation Network where you can see:

- Quote per purchase volume in real time.
- Online documentation and datasheets of all products.
- Estimated delivery time enquiry in real time.
- Logistics systems for the shipment of materials almost anywhere in the world.
- Purchasing management, order record and tracking of shipments.

To access the product, [click on the green button.](#)

Product	Code	Reference	Product link
Terminal box, With 6 terminal blocks, 2.5 mm ² with push-in technology, Material: ABS, gray, 85 mm x 83 mm x 60 mm, Type of locking: Screw-on cover	3001998	E AB A 85X83X60 6MPT	Buy on EAN