



**Automatización Eléctrica**  
Especialistas en Automatización

At the end of this document you will find links to products related to this catalog. You can go directly to our shop by clicking HERE. [HERE](#)

## Surge protection plug - PT 1X2-24DC/FM-ST - 2920078

Please be informed that the data shown in this PDF Document is generated from our Online Catalog. Please find the complete data in the user's documentation. Our General Terms of Use for Downloads are valid (<http://phoenixcontact.com/download>)




Surge protection plug with integrated diagnostic and status indicator on the module and remote indication contact for a 2-wire floating signal circuit.

### Why buy this product

- Plugs can be checked with CHECKMASTER
- Maximum ease of maintenance thanks to the two-piece design
- Base element remains an integral part of the installation
- With floating remote indication contact
- Permanent and independent monitoring by a diagnostics unit
- Consistent plug-in signal circuit protection
- Impedance-neutral disconnection of plug for test and maintenance purposes
- Optical status indication for the individual arresters



### Key Commercial Data

Packing unit	10 STK
GTIN	 4 046356 154000

### Technical data

#### Dimensions

Height	45 mm
Width	17.7 mm
Depth	52 mm
Horizontal pitch	1 Div.
Complete module height	90 mm
Complete module width	17.7 mm
Complete module depth	65.5 mm

#### Ambient conditions

# Surge protection plug - PT 1X2-24DC/FM-ST - 2920078

## Technical data

### Ambient conditions

Ambient temperature (operation)	-40 °C ... 85 °C
Degree of protection	IP20

### General

Housing material	PA 6.6
Flammability rating according to UL 94	V0
Color	black
Standards for clearances and creepage distances	VDE 0110-1
	IEC 60664-1
Mounting type	On base element
Type	DIN rail module, two-section, divisible
Direction of action	Line-Line & Line-Signal Ground/Shield & optional Signal Ground/Shield-Earth Ground

### Protective circuit

IEC test classification	C1
	C2
	C3
	D1
VDE requirement class	C1
	C2
	C3
	D1
Nominal voltage $U_N$	24 V DC
Maximum continuous voltage $U_C$	28 V DC
	20 V AC
Maximum continuous voltage $U_C$ (wire-wire)	28 V DC
	20 V AC
Nominal current $I_N$	450 mA (45°C)
Operating effective current $I_C$ at $U_C$	$\leq 5 \mu A$
Standby power consumption $P_C$	$\leq 1.78 VA$
Residual current $I_{PE}$	$\leq 2 \mu A$ (Directly grounded)
	$\leq 1 \mu A$ (BE: 1x2+F)
Nominal discharge current $I_n$ (8/20) $\mu s$ (Core-Core)	10 kA
Nominal discharge current $I_n$ (8/20) $\mu s$ (Core-Earth)	10 kA
Total surge current (8/20) $\mu s$	20 kA
Max. discharge current $I_{max}$ (8/20) $\mu s$ maximum (Core-Core)	10 kA
Max. discharge current $I_{max}$ (8/20) $\mu s$ maximum (Core-Earth)	10 kA
Nominal pulse current $I_{an}$ (10/1000) $\mu s$ (Core-Core)	33 A (25 °C)
Impulse discharge current (10/350) $\mu s$ , peak value $I_{imp}$	2.5 kA
Output voltage limitation at 1 kV/ $\mu s$ (Core-Core) spike	$\leq 45 V$

# Surge protection plug - PT 1X2-24DC/FM-ST - 2920078

## Technical data

### Protective circuit

Output voltage limitation at 1 kV/ $\mu$ s (Core-Earth) spike	$\leq 450$ V
	$\leq 1$ kV (BE: 1x2+F)
Output voltage limitation at 1 kV/ $\mu$ s (Core-Core) static	$\leq 40$ V
Residual voltage at $I_n$ (conductor-conductor)	$\leq 40$ V
Residual voltage with $I_{an}$ (10/1000) $\mu$ s (conductor-conductor)	$\leq 50$ V
Voltage protection level $U_p$ (core-core)	$\leq 40$ V (C1 (500 V/250 A))
	$\leq 40$ V (C3 - 25 A)
Voltage protection level $U_p$ (core-ground)	$\leq 450$ V (C2 - 10 kV/5 kA)
Response time $t_A$ (Core-Core)	$\leq 1$ ns
Response time $t_A$ (Core-Earth)	$\leq 100$ ns
Input attenuation aE, sym.	typ. 0.5 dB ( $\leq 1$ MHz / 50 $\Omega$ )
	typ. 0.2 dB ( $\leq 400$ kHz/150 $\Omega$ )
Cut-off frequency $f_g$ (3 dB), sym. in 50 Ohm system	typ. 6 MHz
Cut-off frequency $f_g$ (3 dB), sym. in 150 Ohm system	typ. 2.5 MHz
Capacity (Core-Core)	typ. 1.4 nF
Capacity (Core-Earth)	typ. 4 pF
Resistance in series	2.2 $\Omega \pm 10\%$ (7-8/11-12)
Max. required back-up fuse	500 mA (e.g. T ( IEC 127-2/III))
Impulse durability (conductor-conductor)	C2 - 10 kV/5 kA
	C3 - 25 A
Impulse durability (conductor-ground)	C2 - 10 kV/5 kA
	D1 - 2,5 kA
	C3 - 100 A
Alternating current carrying capacity (conductor-ground)	5 A - 1 s

### Connection data

Connection method	Screw connection (in connection with the base element)
Connection type IN	PLUGTRAB plug-in system
Connection type OUT	PLUGTRAB plug-in system
Screw thread	M3
Tightening torque	0.8 Nm
Stripping length	8 mm
Conductor cross section flexible min.	0.2 mm <sup>2</sup>
Conductor cross section flexible max.	2.5 mm <sup>2</sup>
Conductor cross section solid min.	0.2 mm <sup>2</sup>
Conductor cross section solid max.	4 mm <sup>2</sup>
Conductor cross section AWG min.	24
Conductor cross section AWG max.	12

### Standards and Regulations

Standards/regulations	IEC 61643-21
-----------------------	--------------

# Surge protection plug - PT 1X2-24DC/FM-ST - 2920078

## Technical data

### Standards and Regulations

	DIN EN 61643-21
--	-----------------

## Classifications

### eCl@ss

eCl@ss 4.0	27140201
eCl@ss 4.1	27130801
eCl@ss 5.0	27130801
eCl@ss 5.1	27130801
eCl@ss 6.0	27130807
eCl@ss 7.0	27130807
eCl@ss 8.0	27130807
eCl@ss 9.0	27130807

### ETIM

ETIM 2.0	EC000943
ETIM 3.0	EC000943
ETIM 4.0	EC000943
ETIM 5.0	EC000943

### UNSPSC

UNSPSC 6.01	30212010
UNSPSC 7.0901	39121610
UNSPSC 11	39121610
UNSPSC 12.01	39121610
UNSPSC 13.2	39121620

## Approvals

### Approvals

#### Approvals

UL Listed / EAC / EAC

#### Ex Approvals

#### Approvals submitted

### Approval details

## Surge protection plug - PT 1X2-24DC/FM-ST - 2920078

### Approvals

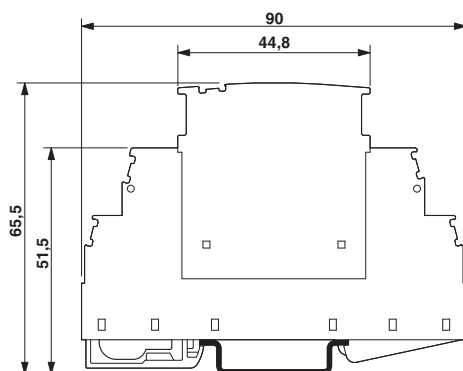
UL Listed 

EAC

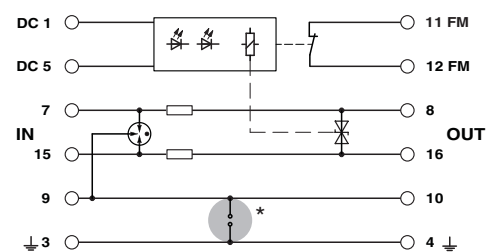
EAC

### Drawings

Dimensional drawing



Circuit diagram



The figure shows the complete module consisting of a base element and connector

Phoenix Contact 2016 © - all rights reserved  
<http://www.phoenixcontact.com>

**PHOENIX CONTACT GmbH & Co. KG**  
Flachsmarktstr. 8  
32825 Blomberg  
Germany  
Tel. +49 5235 300  
Fax +49 5235 3 41200  
<http://www.phoenixcontact.com>

Below is a list of articles with direct links to our shop Electric Automation Network where you can see:

- Quote per purchase volume in real time.
- Online documentation and datasheets of all products.
- Estimated delivery time enquiry in real time.
- Logistics systems for the shipment of materials almost anywhere in the world.
- Purchasing management, order record and tracking of shipments.

To access the product, [click on the green button.](#)

Product	Code	Reference	Product link
Surge protection plug with integrated diagnostic and status indicator on the module and remote indication contact for a 2-wire floating signal circuit.	2920078	PT 1X2-24DC/ FM-ST	<a href="#">Buy on EAN</a>