



**Automatización Eléctrica**  
Especialistas en Automatización

At the end of this document you will find links to products related to this catalog. You can go directly to our shop by clicking HERE. [HERE](#)

## Interface module - VIP-2/PT/D 9SUB/M/LED - 2904258

Please be informed that the data shown in this PDF Document is generated from our Online Catalog. Please find the complete data in the user's documentation. Our General Terms of Use for Downloads are valid (<http://phoenixcontact.com/download>)



VARIOFACE module, with push-in connection and D-SUB miniature pin strip, for mounting on NS 35 rails, with LED, 9-pos.

The illustration shows a 15-position version

### Key Commercial Data

Packing unit	1 STK
GTIN	 4 046356 883856

### Technical data

#### Dimensions

Width	36.8 mm
Height	72.1 mm
Depth	46.6 mm

#### Ambient conditions

Ambient temperature (operation)	-20 °C ... 50 °C
Ambient temperature (storage/transport)	-20 °C ... 70 °C

#### General

Max. perm. operating voltage	24 V DC
Max. perm. current (per branch)	2 A
Number of positions	9
Status display	LED
Mounting position	any
Standards/regulations	IEC 60664
	DIN EN 50178
	IEC 62103
Rated surge voltage	1.2 kV
Degree of pollution	2
Overvoltage category	II

#### Connection data for connection 1

# Interface module - VIP-2/PT/D 9SUB/M/LED - 2904258

## Technical data

### Connection data for connection 1

Connection name	Field level
Connection method	Push-in connection
Stripping length	8 mm
Conductor cross section solid	0.14 mm <sup>2</sup> ... 2.5 mm <sup>2</sup>
Conductor cross section flexible	0.14 mm <sup>2</sup> ... 2.5 mm <sup>2</sup>
Conductor cross section AWG	26 ... 14

### Connection data for connection 2

Connection name	Controller level
Connection method	D-SUB pin strip
Number of connections	1
Number of positions	9

### Standards and Regulations

Connection in acc. with standard	CSA
Standards/regulations	IEC 60664
	DIN EN 50178
	IEC 62103
Degree of pollution	2
Overvoltage category	II

## Classifications

### eCl@ss

eCl@ss 4.0	27250313
eCl@ss 4.1	27250313
eCl@ss 5.0	27250313
eCl@ss 5.1	27250313
eCl@ss 6.0	27242608
eCl@ss 7.0	27141152
eCl@ss 8.0	27141152

### ETIM

ETIM 3.0	EC001604
ETIM 4.0	EC001604
ETIM 5.0	EC002780

### UNSPSC

UNSPSC 6.01	30211824
UNSPSC 7.0901	39121421
UNSPSC 11	39121421
UNSPSC 12.01	39121421

# Interface module - VIP-2/PT/D 9SUB/M/LED - 2904258

## Classifications

### UNSPSC

UNSPSC 13.2	39121421
-------------	----------

## Approvals

### Approvals

### Approvals

CSA / UL Recognized / cUL Recognized / EAC / cULus Recognized

### Ex Approvals

### Approvals submitted

## Approval details

CSA	
mm <sup>2</sup> /AWG/kcmil	26-14
Nominal current I <sub>N</sub>	2 A
Nominal voltage U <sub>N</sub>	24 V

UL Recognized	
mm <sup>2</sup> /AWG/kcmil	26-14
Nominal current I <sub>N</sub>	2 A
Nominal voltage U <sub>N</sub>	24 V

cUL Recognized	
mm <sup>2</sup> /AWG/kcmil	26-14
Nominal current I <sub>N</sub>	2 A
Nominal voltage U <sub>N</sub>	24 V

# Interface module - VIP-2/PT/D 9SUB/M/LED - 2904258

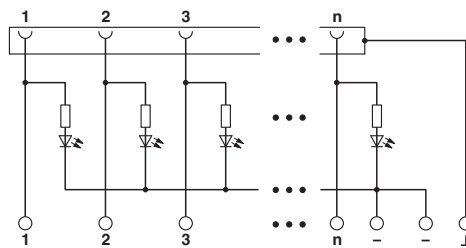
## Approvals

EAC

cULus Recognized

## Drawings

Circuit diagram



Phoenix Contact 2016 © - all rights reserved  
<http://www.phoenixcontact.com>

PHOENIX CONTACT GmbH & Co. KG  
Flachsmarktstr. 8  
32825 Blomberg  
Germany  
Tel. +49 5235 300  
Fax +49 5235 3 41200  
<http://www.phoenixcontact.com>



**Automatización Eléctrica**  
Especialistas en Automatización

Below is a list of articles with direct links to our shop Electric Automation Network where you can see:

- Quote per purchase volume in real time.
- Online documentation and datasheets of all products.
- Estimated delivery time enquiry in real time.
- Logistics systems for the shipment of materials almost anywhere in the world.
- Purchasing management, order record and tracking of shipments.

To access the product, [click on the green button.](#)

Product	Code	Reference	Product link
VARIOFACE module, with push-in connection and D-SUB miniature pin strip, for mounting on NS 35 rails, with LED, 9-pos.	2904258	VIP-2/PT/D 9SUB/M/LED	<a href="#">Buy on EAN</a>