



**Automatización Eléctrica**  
Especialistas en Automatización

At the end of this document you will find links to products related to this catalog. You can go directly to our shop by clicking [HERE](#). [HERE](#)

## Surge protection device - DT-UFB-IB-RBI - 2800055

Please be informed that the data shown in this PDF Document is generated from our Online Catalog. Please find the complete data in the user's documentation. Our General Terms of Use for Downloads are valid (<http://phoenixcontact.com/download>)

Attachment plug with surge protection for 5-conductor remote bus input. Connection: 9-pos. D-SUB plug - socket. Can alternatively be snapped onto DIN rails. Incl. 1 m cable with 9-pos. D-SUB connection.



### Why buy this product

- 9-pos. D-SUB connection
- Adapter type
- DIN rail mounting possible by removing the cap
- D-SUB cable included
- For remote bus modules (remote bus IN - RBI)



### Key Commercial Data

Packing unit	1 STK
GTIN	 4 046356 462716

### Technical data

#### Dimensions

Height	110 mm
Width	25 mm
Depth	63 mm

#### Ambient conditions

Ambient temperature (operation)	-40 °C ... 85 °C
Degree of protection	IP20

#### General

Housing material	Zinc die-cast
Color	silver/black
Standards for clearances and creepage distances	IEC 60664-1
	VDE 0110-1
Mounting type	Connection-specific attachment plug and DIN rail, 35 mm

# Surge protection device - DT-UFB-IB-RBI - 2800055

## Technical data

### General

Type	Attachment plug for DIN rail mounting
Number of positions	5
Direction of action	Line-Line & Line-Ground/Shield

### Protective circuit

IEC test classification	B2
	C1
	C2
	C3
	D1
VDE requirement class	B2
	C1
	C2
	C3
	D1
Maximum continuous voltage $U_C$	5.8 V DC
Maximum continuous voltage $U_C$ (wire-wire)	5.8 V DC
Nominal current $I_N$	$\leq 180$ mA (25 °C)
Operating effective current $I_C$ at $U_C$	$\leq 1$ $\mu$ A
Residual current $I_{PE}$	$\leq 5$ $\mu$ A
Nominal discharge current $I_n$ (8/20) $\mu$ s (Core-Core)	$\leq 5$ kA
Nominal discharge current $I_n$ (8/20) $\mu$ s (Core-Earth)	$\leq 5$ kA
Total surge current (8/20) $\mu$ s	10 kA
Output voltage limitation at 1 kV/ $\mu$ s (Core-Earth) spike	$\leq 700$ V
Output voltage limitation at 1 kV/ $\mu$ s (Core-Core) static	$\leq 15$ V
Output voltage limitation at 1 kV/ $\mu$ s (Core-Earth) static	$\leq 700$ V
Output voltage limitation at 1 kV/ $\mu$ s (Core-GND) static	$\leq 15$ V
Residual voltage at $I_n$ (conductor-conductor)	$\leq 25$ V
Residual voltage at $I_n$ (conductor-ground)	$\leq 55$ V
Residual voltage at $I_n$ (conductor-GND)	$\leq 25$ V
Voltage protection level $U_p$ (core-core)	$\leq 16$ V (B2 - 100 A)
	$\leq 20$ V (C1 - 500 A)
	$\leq 20$ V (C2 - 1 kA)
	$\leq 60$ V (C2 - 5 kA)
Voltage protection level $U_p$ (core-ground)	$\leq 700$ V (B2 - 100 A)
	$\leq 700$ V (C1 - 500 A)
	$\leq 700$ V (C2 - 5 kA)
Response time $t_A$ (Core-Core)	$\leq 1$ ns
Response time $t_A$ (Core-Earth)	$\leq 100$ ns
Input attenuation aE, sym.	typ. 0.5 dB ( $\leq 5$ MHz / 150 $\Omega$ )
	typ. 0.6 dB ( $\leq 10$ MHz - 100/150 $\Omega$ )

# Surge protection device - DT-UFB-IB-RBI - 2800055

## Technical data

### Protective circuit

Cut-off frequency fg (3 dB), sym. in 100 Ohm system	≥ 100 MHz
Cut-off frequency fg (3 dB), sym. in 150 Ohm system	≥ 100 MHz
Capacity (Core-Core)	typ. 20 pF
Resistance in series	typ. 7 Ω
Impulse durability (conductor-conductor)	C1 - 1 kV/500 A
	C2 - 10 kV/5 kA
	B2 - 4 kV/100 A
Impulse durability (conductor-ground)	B2 - 4 kV/100 A
	C1 - 1 kV/500 A
	C2 - 10 kV/5 kA
	D1 - 1 kA

### Connection data

Connection method	D-SUB-9
Connection type IN	D-SUB-9 plug
Connection type OUT	D-SUB-9 socket
Connection method	Remote bus input

### Connection, equipotential bonding

Connection method	Cable connection
-------------------	------------------

### Standards and Regulations

Standards/regulations	IEC 61643-21
	DIN EN 61643-21

## Classifications

### eCl@ss

eCl@ss 4.0	27140201
eCl@ss 4.1	27130801
eCl@ss 5.0	27130801
eCl@ss 5.1	27130801
eCl@ss 6.0	27130807
eCl@ss 7.0	27130807
eCl@ss 8.0	27130807
eCl@ss 9.0	27130807

### ETIM

ETIM 2.0	EC000943
ETIM 3.0	EC000943
ETIM 4.0	EC000943
ETIM 5.0	EC000943

# Surge protection device - DT-UFB-IB-RBI - 2800055

## Classifications

### UNSPSC

UNSPSC 6.01	30212010
UNSPSC 7.0901	39121610
UNSPSC 11	39121610
UNSPSC 12.01	39121610
UNSPSC 13.2	39121620

## Approvals

### Approvals

---

### Approvals

EAC

---

### Ex Approvals

---

### Approvals submitted

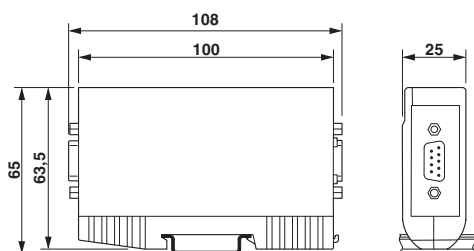
---

### Approval details

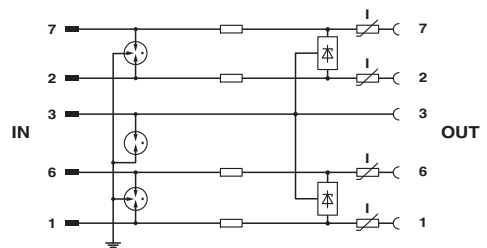
EAC

## Drawings

Dimensional drawing



Circuit diagram



Phoenix Contact 2016 © - all rights reserved  
<http://www.phoenixcontact.com>

PHOENIX CONTACT GmbH & Co. KG  
Flachmarktstr. 8  
32825 Blomberg  
Germany  
Tel. +49 5235 300  
Fax +49 5235 3 41200  
<http://www.phoenixcontact.com>



Below is a list of articles with direct links to our shop Electric Automation Network where you can see:

- Quote per purchase volume in real time.
- Online documentation and datasheets of all products.
- Estimated delivery time enquiry in real time.
- Logistics systems for the shipment of materials almost anywhere in the world.
- Purchasing management, order record and tracking of shipments.

To access the product, [click on the green button.](#)

Product	Code	Reference	Product link
Attachment plug with surge protection for 5-conductor remote bus input. Connection: 9-pos. D-SUB plug - socket. Can alternatively be snapped onto DIN rails. Incl. 1 m cable with 9-pos. D-SUB connection.	2800055	DT-UFB-IB-RBI	<a href="#">Buy on EAN</a>