



**Automatización Eléctrica**  
Especialistas en Automatización

At the end of this document you will find links to products related to this catalog. You can go directly to our shop by clicking [HERE](#). [HERE](#)

# Bus coupler - FLM BK EIP M12 DI 8 M12-2TX - 2773322

Please be informed that the data shown in this PDF Document is generated from our Online Catalog. Please find the complete data in the user's documentation. Our General Terms of Use for Downloads are valid (<http://phoenixcontact.com/download>)



The EtherNet/IP™ bus coupler opens a local bus for up to 16 devices. Additional functions: 10 Mbps and 100 Mbps, auto negotiation, auto crossover, 8 digital inputs, channel-specific diagnostics, short-circuit/overload protection, M12 fast connection technology.

## Why buy this product

- EtherNet/IP™
- 8 inputs, 24 V DC
- M12 connection technology with SPEEDCON fast locking system

## EtherNet/IP

## Key Commercial Data

Packing unit	1 STK
GTIN	 4 046356 166096

## Technical data

### Note

Utilization restriction	EMC: class A product, see manufacturer's declaration in the download area
-------------------------	---

### Dimensions

Width	70 mm
Height	178 mm
Depth	50 mm
Drill hole spacing	178 mm

### Ambient conditions

Ambient temperature (operation)	-25 °C ... 60 °C
Ambient temperature (storage/transport)	-25 °C ... 85 °C
Permissible humidity (storage/transport)	95 %
Air pressure (operation)	80 kPa ... 106 kPa (up to 2000 m above sea level)
Air pressure (storage/transport)	70 kPa ... 106 kPa (up to 3000 m above sea level)
Degree of protection	IP65/IP67

### General

Net weight	280 g
------------	-------

# Bus coupler - FLM BK EIP M12 DI 8 M12-2TX - 2773322

## Technical data

### General

Mounting type	Wall mounting
	Wall mounting, optionally on mounting plate

### Interfaces

Fieldbus system	EtherNet/IP™
Designation	EtherNet/IP™
Connection method	M12 connectors, D-coded
Designation connection point	Copper cable
Transmission speed	10/100 MBit/s (auto negotiation)
Number of positions	4

### Local bus gateway

Designation	Local bus gateway
Connection method	M12 connector, B-coded
Transmission speed	500 kbaud/2 Mbaud, can be selected
Max. number of local bus devices	16
Max. length of local bus	20 m

### Power supply for module electronics

Connection method	M12 connector
Designation	$U_L$
Supply voltage	24 V DC
Supply voltage range	18 V DC ... 30 V DC (including ripple)
Supply current	< 100 mA

### Fieldline potentials

Voltage supply $U_L$	24 V DC
Power supply at $U_L$	max. 4 A
Current consumption from $U_L$	max. 118 mA (At 2 Mbaud)
	typ. 118 mA (At 2 Mbaud)
	max. 60 mA (At 500 kBaud)
	typ. 60 mA (At 500 kBaud)
Voltage supply $U_S$	24 V DC
Power supply at $U_S$	max. 4 A
Current consumption from $U_S$	typ. 5 mA (plus power supply for sensors)
	max. 600 mA

### Digital inputs

Input name	Digital inputs
Connection method	M12 connector
	2, 3, 4-wire
Number of inputs	8 (EN 61131-2 type 1)

# Bus coupler - FLM BK EIP M12 DI 8 M12-2TX - 2773322

## Technical data

### Digital inputs

Protective circuit	Short-circuit protection, overload protection of the sensor supply Protection against polarity reversal
Filter time	3 ms
Input characteristic curve	IEC 61131-2 type 1
Input voltage	24 V DC
Input voltage range "0" signal	-30 V DC ... 5 V DC
Input voltage range "1" signal	13 V DC ... 30 V DC

### Standards and Regulations

Test section	To I/O 500 V DC
Connection in acc. with standard	CUL
Protection class	III, IEC 61140, EN 61140, VDE 0140-1

## Classifications

### eCl@ss

eCl@ss 4.0	27250203
eCl@ss 4.1	27250203
eCl@ss 5.0	27250203
eCl@ss 5.1	27242608
eCl@ss 6.0	27242608
eCl@ss 7.0	27242608
eCl@ss 8.0	27242604
eCl@ss 9.0	27242604

### ETIM

ETIM 2.0	EC001434
ETIM 3.0	EC001604
ETIM 4.0	EC001604
ETIM 5.0	EC001599

### UNSPSC

UNSPSC 6.01	43172015
UNSPSC 7.0901	43201404
UNSPSC 11	43172015
UNSPSC 12.01	43201404
UNSPSC 13.2	43201404

## Approvals

### Approvals

# Bus coupler - FLM BK EIP M12 DI 8 M12-2TX - 2773322

## Approvals

Approvals

UL Recognized / cUL Recognized / cULus Recognized

---

Ex Approvals

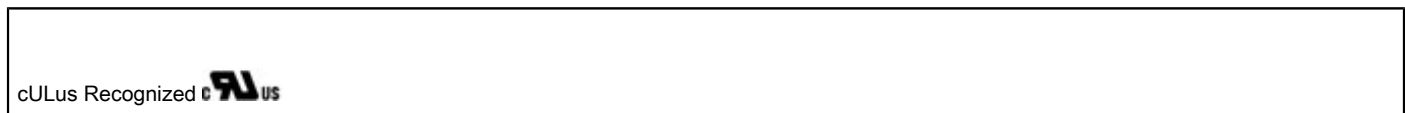
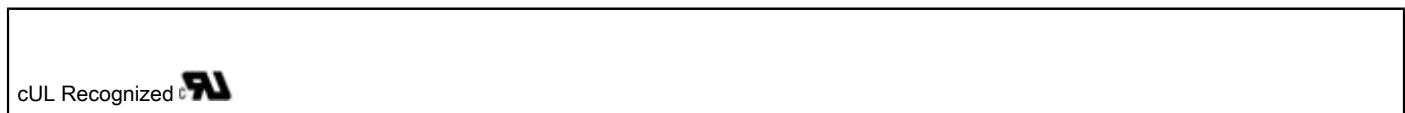
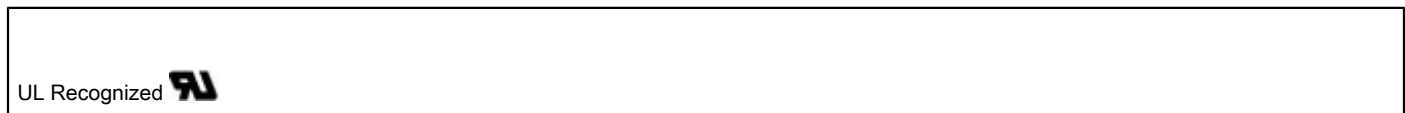
UL Recognized / cUL Recognized / cULus Recognized

---

Approvals submitted

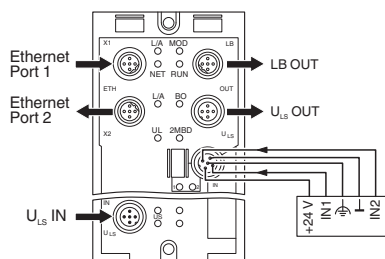
---

## Approval details

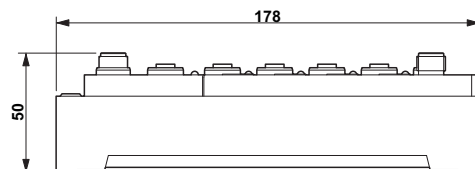


## Drawings

Connection diagram



Dimensional drawing



Phoenix Contact 2016 © - all rights reserved  
<http://www.phoenixcontact.com>

PHOENIX CONTACT GmbH & Co. KG  
Flachsmarktstr. 8  
32825 Blomberg  
Germany  
Tel. +49 5235 300  
Fax +49 5235 3 41200  
<http://www.phoenixcontact.com>



Below is a list of articles with direct links to our shop Electric Automation Network where you can see:

- Quote per purchase volume in real time.
- Online documentation and datasheets of all products.
- Estimated delivery time enquiry in real time.
- Logistics systems for the shipment of materials almost anywhere in the world.
- Purchasing management, order record and tracking of shipments.

To access the product, [click on the green button.](#)

Product	Code	Reference	Product link
The EtherNet/IP™ bus coupler opens a local bus for up to 16 devices. Additional functions: 10 Mbps and 100 Mbps, auto negotiation, auto crossover, 8 digital inputs, channel-specific diagnostics, short-circuit/overload protection, M12 fast connection technology.	2773322	FLM BK EIP M12 DI 8 M12-2TX	<a href="#">Buy on EAN</a>