



Automatización Eléctrica
Especialistas en Automatización

At the end of this document you will find links to products related to this catalog. You can go directly to our shop by clicking [HERE](#). [HERE](#)

Distributed I/O device - FLM AI 4 SF M12 - 2736453

Please be informed that the data shown in this PDF Document is generated from our Online Catalog. Please find the complete data in the user's documentation. Our General Terms of Use for Downloads are valid (<http://phoenixcontact.com/download>)



The local bus device has 4 analog inputs. Functions: 3 current and 4 voltage measuring ranges, 500 kbaud/2 Mbaud selection, PCP or process data communication, channel-specific diagnostics, short-circuit/overload protection, M12 fast connection technology.

Why buy this product

- Flexible power supply concept
- SPEEDCON fast locking system
- Short-circuit and overload protection
- Diagnostic and status indicators
- Consistent connection via M12 connectors

Key Commercial Data

Packing unit	1 STK
GTIN	 4 017918 974244

Technical data

Note

Utilization restriction	EMC: class A product, see manufacturer's declaration in the download area
-------------------------	---

Dimensions

Width	70 mm
Height	178 mm
Depth	50 mm
Drill hole spacing	168 mm

Ambient conditions

Ambient temperature (operation)	-25 °C ... 60 °C
Ambient temperature (storage/transport)	-25 °C ... 85 °C
Permissible humidity (operation)	95 %
Permissible humidity (storage/transport)	95 %
Air pressure (operation)	80 Pa ... 106 kPa (up to 2000 m above sea level)
Air pressure (storage/transport)	70 kPa ... 106 kPa (up to 3000 m above sea level)
Degree of protection	IP65/IP67

Distributed I/O device - FLM AI 4 SF M12 - 2736453

Technical data

General

Net weight	280 g
Mounting type	Wall mounting

Interfaces

Designation	Fieldline local bus
Connection method	M12 connector, B-coded
Transmission speed	500 kBit/s / 2 MBit/s

Power supply for module electronics

Supply voltage	24 V DC
Supply voltage range	18 V DC ... 30 V DC (including ripple)

Fieldline potentials

Voltage supply U_L	24 V DC (including ripple)
Power supply at U_L	max. 4 A
Current consumption from U_L	max. 100 mA (At 2 Mbaud)
	typ. 70 mA
Voltage supply U_S	24 V DC
Power supply at U_S	max. 4 A
Current consumption from U_S	typ. 5 mA (plus power supply for sensors)
	max. 400 mA

Analog inputs

Number of inputs	max. 4 (differential inputs, voltage or current)
Connection method	M12 connector
	2, 4-conductor
Input name	Analog inputs
Type of protection	Protection against polarity reversal
Current input signal	0 mA ... 0.02 A
	4 mA ... 0.02 A
	-20 mA ... 0.02 A
Voltage input signal	0 V ... 5 V
	-5 V ... 5 V
	0 V ... 10 V
	-10 V ... 10 V

Standards and Regulations

Test section	To I/O 500 V AC
Mechanical tests	Shock in acc. with EN 60068-2-27/IEC 60068-2-27 Load 30g, half sine wave, positive and negative per direction
	Vibration resistance in acc. with EN 60068-2-6/IEC 60068-2-6 5g in each space direction
Connection in acc. with standard	CUL

Distributed I/O device - FLM AI 4 SF M12 - 2736453

Technical data

Standards and Regulations

Protection class	III, IEC 61140, EN 61140, VDE 0140-1
------------------	--------------------------------------

Classifications

eCl@ss

eCl@ss 4.0	27250303
eCl@ss 4.1	27250303
eCl@ss 5.0	27250303
eCl@ss 5.1	27250303
eCl@ss 6.0	27242601
eCl@ss 7.0	27242601
eCl@ss 8.0	27242601

ETIM

ETIM 2.0	EC001431
ETIM 3.0	EC001596
ETIM 4.0	EC001596
ETIM 5.0	EC001596

UNSPSC

UNSPSC 6.01	43172015
UNSPSC 7.0901	43201404
UNSPSC 11	43172015
UNSPSC 12.01	43201404
UNSPSC 13.2	43201404

Approvals

Approvals

Approvals

UL Recognized / cUL Recognized / EAC / cULus Recognized

Ex Approvals


UL Recognized / cUL Recognized / cULus Recognized


Approvals submitted

Approval details


Distributed I/O device - FLM AI 4 SF M12 - 2736453

Approvals

UL Recognized 

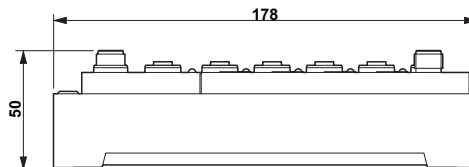
cUL Recognized 

EAC

cULus Recognized 

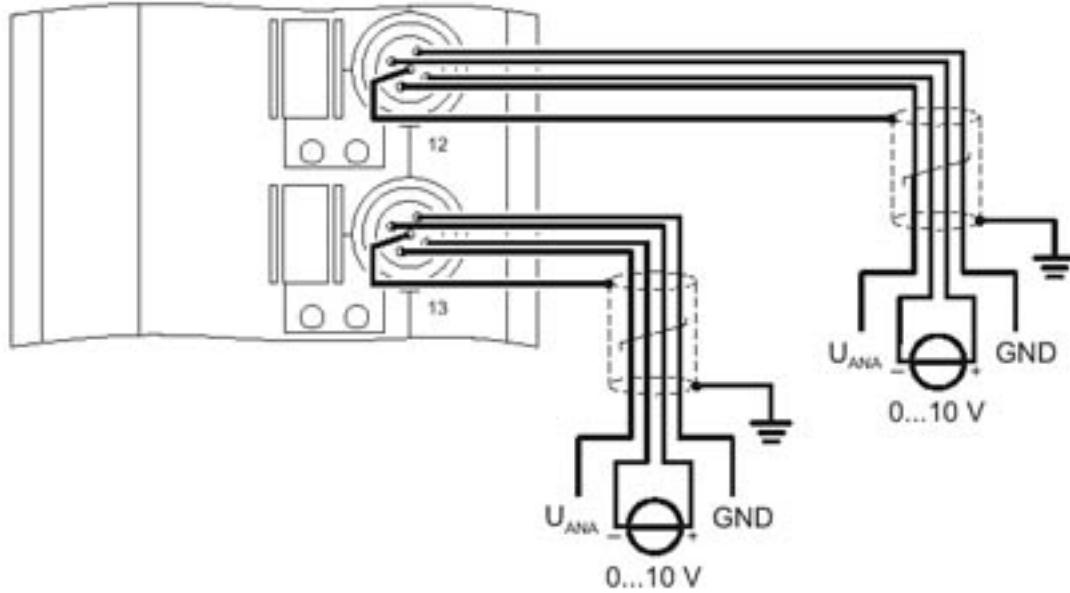
Drawings

Dimensional drawing



Distributed I/O device - FLM AI 4 SF M12 - 2736453

Connection diagram



Phoenix Contact 2016 © - all rights reserved
<http://www.phoenixcontact.com>

PHOENIX CONTACT GmbH & Co. KG
Flachsmarktstr. 8
32825 Blomberg
Germany
Tel. +49 5235 300
Fax +49 5235 3 41200
<http://www.phoenixcontact.com>

Below is a list of articles with direct links to our shop Electric Automation Network where you can see:

- Quote per purchase volume in real time.
- Online documentation and datasheets of all products.
- Estimated delivery time enquiry in real time.
- Logistics systems for the shipment of materials almost anywhere in the world.
- Purchasing management, order record and tracking of shipments.

To access the product, [click on the green button.](#)

Product	Code	Reference	Product link
The local bus device has 4 analog inputs. Functions: 3 current and 4 voltage measuring ranges, 500 kbaud/2 Mbaud selection, PCP or process data communication, channel-specific diagnostics, short-circuit/overload protection, M12 fast connection technology.	2736453	FLM AI 4 SF M12	Buy on EAN