



Automatización Eléctrica
Especialistas en Automatización

At the end of this document you will find links to products related to this catalog. You can go directly to our shop by clicking HERE. [HERE](#)

Printed-circuit board connector - HSCP-SP 2,5-1U-20 7035 - 2201782


Please be informed that the data shown in this PDF Document is generated from our Online Catalog. Please find the complete data in the user's documentation. Our General Terms of Use for Downloads are valid (<http://phoenixcontact.com/download>)



Plug component, Nominal current: 8 A, Rated voltage (III/2): 300 V, Number of positions: 2, Pitch: 5 mm, Connection method: Push-in technology, Color: light gray, Contact surface: Tin, Please observe the derating curve of the item



Key Commercial Data

Packing unit	50 STK
GTIN	 4 046356 911467

Technical data

Dimensions

Length	10.9 mm
Height	21.6 mm
Width	18.8 mm
Pitch	5.00 mm

General

Rated surge voltage (III/3)	4 kV
Rated surge voltage (III/2)	4 kV
Rated surge voltage (II/2)	2.5 kV
Rated voltage (III/2)	300 V
Rated voltage (II/2)	600 V
Connection in acc. with standard	EN-VDE
Nominal current I_N	8 A
Nominal cross section	2.5 mm ²
Insulating material	PA
Flammability rating according to UL 94	V0
Number of positions	2

Connection data

Conductor cross section solid min.	0.2 mm ²
------------------------------------	---------------------

Printed-circuit board connector - HSCP-SP 2,5-1U-20 7035 - 2201782

Technical data

Connection data

Conductor cross section solid max.	1.5 mm ²
Conductor cross section flexible min.	0.2 mm ²
Conductor cross section flexible max.	2.5 mm ²
Conductor cross section flexible, with ferrule without plastic sleeve min.	0.25 mm ²
Conductor cross section flexible, with ferrule without plastic sleeve max.	1.5 mm ²
Conductor cross section flexible, with ferrule with plastic sleeve min.	0.25 mm ²
Conductor cross section flexible, with ferrule with plastic sleeve max.	1.5 mm ²
Conductor cross section AWG min.	24
Conductor cross section AWG max.	16

Standards and Regulations

Connection in acc. with standard	EN-VDE
Flammability rating according to UL 94	V0

Classifications

eCl@ss

eCl@ss 5.0	27180506
eCl@ss 5.1	27180506
eCl@ss 6.0	27180802
eCl@ss 8.0	27440309

ETIM

ETIM 4.0	EC001031
ETIM 5.0	EC002638

Approvals

Approvals

Approvals

cULus Recognized

Ex Approvals

Approvals submitted

Approval details

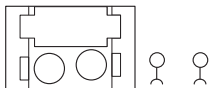
Printed-circuit board connector - HSCP-SP 2,5-1U-20 7035 - 2201782

Approvals

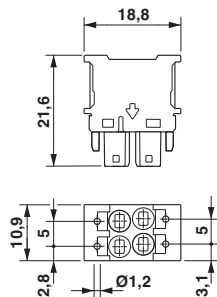
cULus Recognized		
	B	D
mm²/AWG/kcmil	24-16	24-16
Nominal current I _N	8 A	8 A
Nominal voltage U _N	150 V	300 V

Drawings

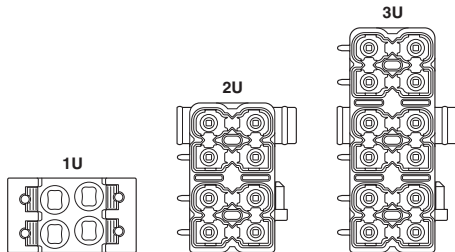
Schematic diagram



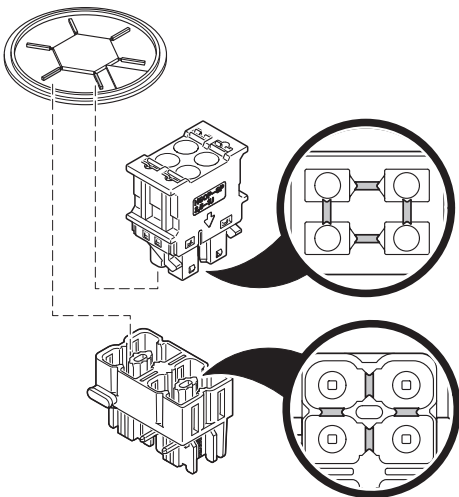
Dimensional drawing



Schematic diagram

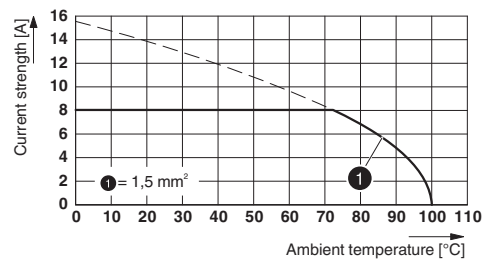


Schematic diagram



Printed-circuit board connector - HSCP-SP 2,5-1U-20 7035 - 2201782

Diagram



Type: HSCP-SP 2,5... with HSCH 2,5...

Phoenix Contact 2016 © - all rights reserved
<http://www.phoenixcontact.com>

PHOENIX CONTACT GmbH & Co. KG
Flachsmarktstr. 8
32825 Blomberg
Germany
Tel. +49 5235 300
Fax +49 5235 3 41200
<http://www.phoenixcontact.com>

Below is a list of articles with direct links to our shop Electric Automation Network where you can see:

- Quote per purchase volume in real time.
- Online documentation and datasheets of all products.
- Estimated delivery time enquiry in real time.
- Logistics systems for the shipment of materials almost anywhere in the world.
- Purchasing management, order record and tracking of shipments.

To access the product, [click on the green button.](#)

Product	Code	Reference	Product link
Plug component, Nominal current: 8 A, Rated voltage (III/2): 300 V, Number of positions: 2, Pitch: 5 mm, Connection method: Push-in technology, Color: light gray, Contact surface: Tin, Please observe the derating curve of the item	2201782	HSCP-SP 2,5-1U-20 7035	Buy on EAN