



Automatización Eléctrica
Especialistas en Automatización

At the end of this document you will find links to products related to this catalog. You can go directly to our shop by clicking HERE. [HERE](#)

AC charging cable - EV-TAM3PC-1AC20A-4,0M2,5ESBK00 - 1621481

Please be informed that the data shown in this PDF Document is generated from our Online Catalog. Please find the complete data in the user's documentation. Our General Terms of Use for Downloads are valid (<http://phoenixcontact.com/download>)

Mobile AC charging cable with Vehicle Connector and Infrastructure Plug (including protective caps), Type 1, Type 2, IEC 62196-2, SAE J1772, 20 A / 250 V (AC), Cable data: 4 m, black, straight



Product Description

Mobile AC charging cable with Vehicle Connector and Infrastructure Plug for charging electric vehicles (EV) with alternating current (AC), via a type 1 Vehicle-Inlet, compatible with Type 2 Infrastructure Socket Outlets at charging stations (EVSE)

Key Commercial Data

Packing unit	1 STK
GTIN	 4 046356 934169

Technical data

Product definition

Product type	Mobile AC charging cable with Vehicle Connector and Infrastructure Plug (including protective caps)
Standards/regulations	IEC 62196-2
	SAE J1772
Charging standard	Type 1
	Type 2
Charging mode	Mode 3
Type of charging current	AC single-phase

Dimensions

Conductor length	4 m
------------------	-----

Features

Charging power	5 kW
Number of phases	1
Rated current for power contacts	20 A
Rated voltage for power contacts	250 V AC
Rated current for signal contacts	2 A
Rated voltage for signal contacts	30 V AC
Type of signal transmission	Pulse width modulation
Number of power contacts	3 (L1, N, PE)

AC charging cable - EV-TAM3PC-1AC20A-4,0M2,5ESBK00 - 1621481

Technical data

Features

Number of signal contacts	2 (CP, CS)
Connection method	Crimp connection, cannot be separated
Resistor coding	480 Ω (Lever actuated)
	150 Ω (Lever not actuated)
Insertion force	< 75 N
Withdrawal force	< 75 N
Insertion/withdrawal cycles	> 10000
Ambient temperature (operation)	-30 °C ... 50 °C (Operation)
Ambient temperature (storage/transport)	-40 °C ... 80 °C (Storage)
Altitude difference for area of application	5000 m (above sea level)
Degree of protection	IP44 (plugged in)
	IP54 (Protective cap)

Cable

Cable structure	3 x 2.5 mm ² + 1 x 0.5 mm ² (DIN EN 13602, VDE 0295 class 5)
External cable diameter	10.5 mm \pm 0.5 mm
Type of conductor	straight
Outer sheath, material	PUR
External sheath, color	black
Minimum bending radius	52.5 mm (5 x diameter)

Classifications

eCl@ss

eCl@ss 5.1	27260701
eCl@ss 6.0	27279220
eCl@ss 8.0	27440590
eCl@ss 9.0	27144705

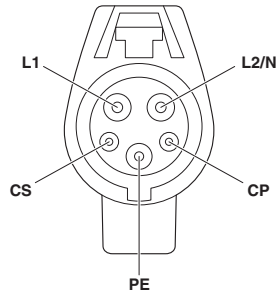
ETIM

ETIM 4.0	EC002839
ETIM 5.0	EC002839

Drawings

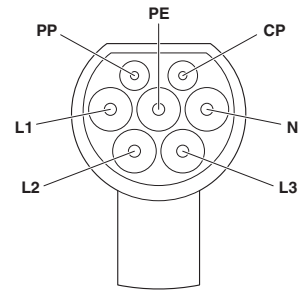
AC charging cable - EV-TAM3PC-1AC20A-4,0M2,5ESBK00 - 1621481

Connection diagram



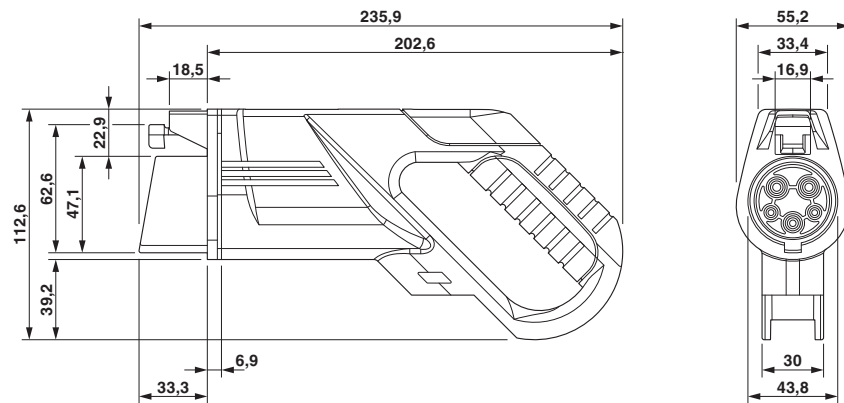
Pin assignment of the Vehicle Connector

Connection diagram



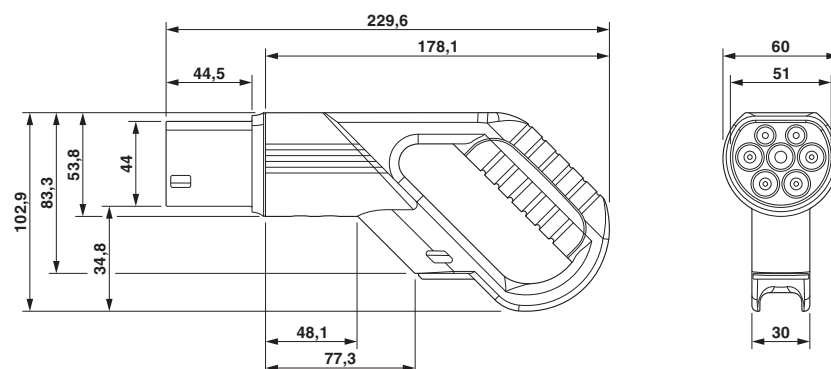
Pin assignment of Infrastructure Plug

Dimensional drawing



Dimensional drawing of Vehicle Connector

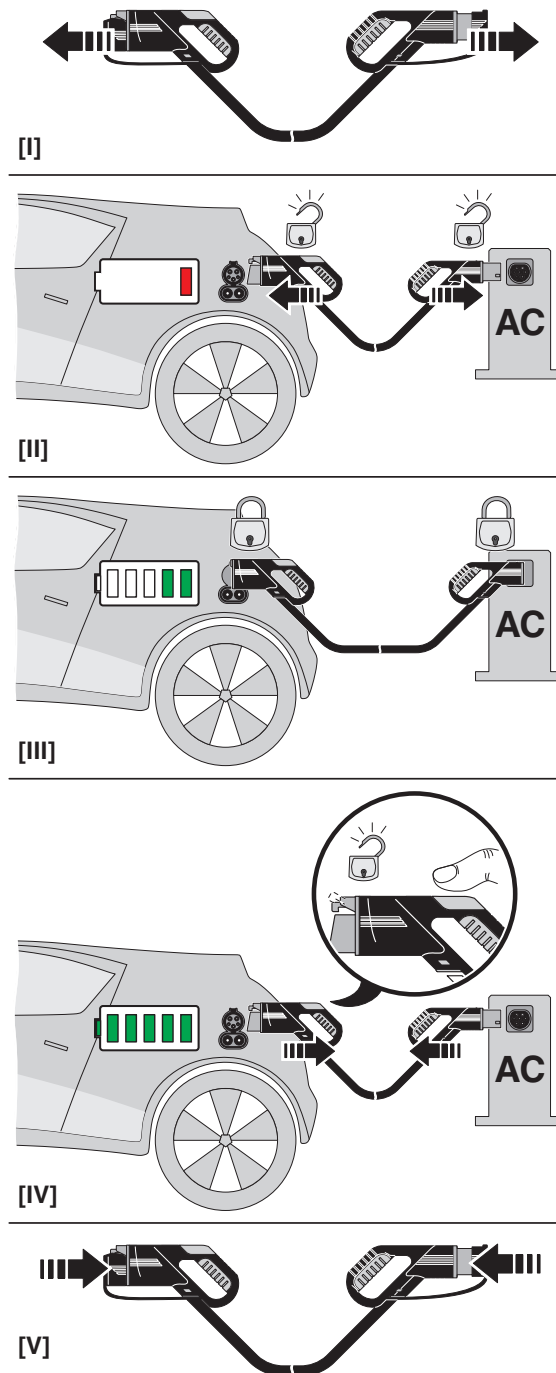
Dimensional drawing



Dimensional drawing of the Infrastructure Plug

AC charging cable - EV-TAM3PC-1AC20A-4,0M2,5ESBK00 - 1621481

Schematic diagram



Phoenix Contact 2016 © - all rights reserved
<http://www.phoenixcontact.com>

PHOENIX CONTACT GmbH & Co. KG
Flachsmarktstr. 8
32825 Blomberg
Germany
Tel. +49 5235 300
Fax +49 5235 3 41200
<http://www.phoenixcontact.com>

Below is a list of articles with direct links to our shop Electric Automation Network where you can see:

- Quote per purchase volume in real time.
- Online documentation and datasheets of all products.
- Estimated delivery time enquiry in real time.
- Logistics systems for the shipment of materials almost anywhere in the world.
- Purchasing management, order record and tracking of shipments.

To access the product, click on the green button.

Product	Code	Reference	Product link
Mobile AC charging cable with Vehicle Connector and Infrastructure Plug (including protective caps), Type 1, Type 2, IEC 62196-2, SAE J1772, 20 A / 250 V (AC), Cable data: 4 m, black, straight	1621481	EV-TAM3PC-1AC20A-4,0M2,5ESBK00	Buy on EAN