



Automatización Eléctrica
Especialistas en Automatización

At the end of this document you will find links to products related to this catalog. You can go directly to our shop by clicking [HERE](#). [HERE](#)

Panel feed-through - SACC-DSIV-FS-8CON-L180 SCOTHR - 1542790

Please be informed that the data shown in this PDF Document is generated from our Online Catalog. Please find the complete data in the user's documentation. Our General Terms of Use for Downloads are valid (<http://phoenixcontact.com/download>)



Sensor/actuator flush-type connector, socket, 8-pos., M12 SPEEDCON, A-coded, rear/screw mounting with M12 thread, with polarity protection, with straight THR solder connection



Key Commercial Data

| | |
|------------------------|---------------------|
| Packing unit | 60 STK |
| Minimum order quantity | 60 STK |
| GTIN | 4 046356 097833 |

Technical data

Ambient conditions

| | |
|---------------------------------|---------------------------|
| Ambient temperature (operation) | -25 °C ... 85 °C (Socket) |
| Degree of protection | IP67 |

General

| | |
|------------------------|-------------------------------------|
| Rated current at 40 °C | 2 A |
| Rated voltage | 30 V |
| Number of positions | 8 |
| Insulation resistance | ≥ 100 MΩ |
| Coding | A - standard |
| Status display | No |
| Overvoltage category | II |
| Degree of pollution | 3 |
| Connection method | THR solder connection |
| Mounting type | Rear mounting M12 x 1 With flat nut |

Material

| | |
|--|------|
| Flammability rating according to UL 94 | HB |
| Contact material | CuZn |
| Contact surface material | Au |

Panel feed-through - SACC-DSIV-FS-8CON-L180 SCOTHR - 1542790

Technical data

Material

| | |
|--------------------------|------------------------------|
| Contact carrier material | PPA |
| Material, knurls | Zinc die-cast, nickel-plated |
| Sealing material | FKM / EPDM |

Standards and Regulations

| | |
|--|----|
| Flammability rating according to UL 94 | HB |
|--|----|

Classifications

eCl@ss

| | |
|------------|----------|
| eCl@ss 4.0 | 27250313 |
| eCl@ss 4.1 | 27250313 |
| eCl@ss 5.0 | 27143423 |
| eCl@ss 5.1 | 27143423 |
| eCl@ss 6.0 | 27143423 |
| eCl@ss 7.0 | 27449001 |
| eCl@ss 8.0 | 27440103 |

ETIM

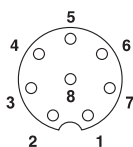
| | |
|----------|----------|
| ETIM 3.0 | EC002061 |
| ETIM 4.0 | EC002062 |
| ETIM 5.0 | EC002061 |

UNSPSC

| | |
|---------------|----------|
| UNSPSC 6.01 | 31251501 |
| UNSPSC 7.0901 | 31251501 |
| UNSPSC 11 | 31251501 |
| UNSPSC 12.01 | 31251501 |
| UNSPSC 13.2 | 31251501 |

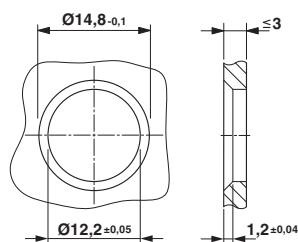
Drawings

Schematic diagram



Pin assignment M12 socket, 8-pos., A-coded, view female side

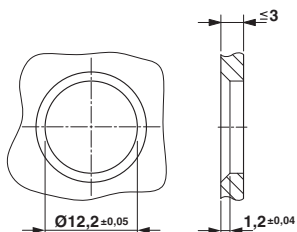
Dimensional drawing



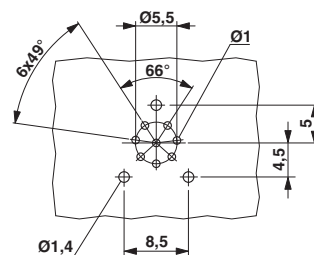
Housing cut-out for two-part M12 flush-type connectors with THR and wave soldering connection, version 1

Panel feed-through - SACC-DSIV-FS-8CON-L180 SCOTHR - 1542790

Dimensional drawing

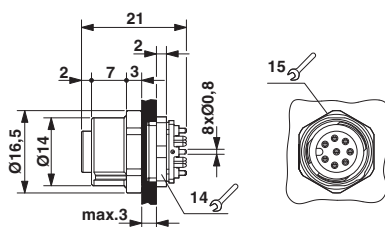


Drilling diagram

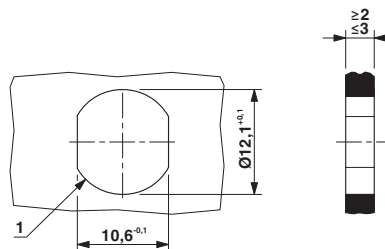


Housing cut-out for two-part M12 flush-type connectors with THR and wave soldering connection, version 2

Dimensional drawing



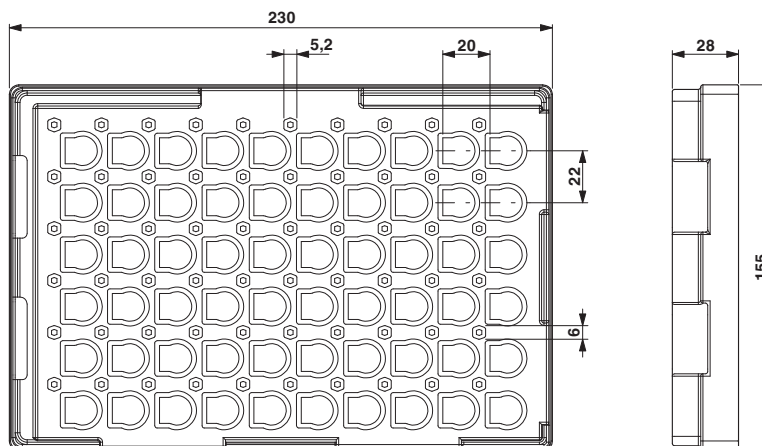
Dimensional drawing



M12 flush-type connector

Housing cutout for M12 fastening thread, mounting panel with feed-through hole (alternative with surface as protection against rotation)

Dimensional drawing



THR tray packaging

Phoenix Contact 2016 © - all rights reserved
<http://www.phoenixcontact.com>

PHOENIX CONTACT GmbH & Co. KG
Flachmarktstr. 8
32825 Blomberg
Germany
Tel. +49 5235 300
Fax +49 5235 3 41200
<http://www.phoenixcontact.com>

Below is a list of articles with direct links to our shop Electric Automation Network where you can see:

- Quote per purchase volume in real time.
- Online documentation and datasheets of all products.
- Estimated delivery time enquiry in real time.
- Logistics systems for the shipment of materials almost anywhere in the world.
- Purchasing management, order record and tracking of shipments.

To access the product, [click on the green button.](#)

| Product | Code | Reference | Product link |
|---|-------------|-------------------------------|----------------------------|
| Sensor/actuator flush-type connector, socket, 8-pos., M12 SPEEDCON, A-coded, rear/screw mounting with M12 thread, with polarity protection, with straight THR solder connection | 1542790 | SACC-DSIV-FS-8CON-L180 SCOTHR | Buy on EAN |