



Automatización Eléctrica
Especialistas en Automatización

At the end of this document you will find links to products related to this catalog. You can go directly to our shop by clicking [HERE](#). [HERE](#)

Flush-type socket - SACC-DSIV-FS-8CON-L180-10G SCO - 1440669

Please be informed that the data shown in this PDF Document is generated from our Online Catalog. Please find the complete data in the user's documentation. Our General Terms of Use for Downloads are valid (<http://phoenixcontact.com/download>)



Flush-type socket, CAT6_A, Ethernet, 8-pos., M12 SPEEDCON, rear/screw mounting with M12 fastening thread, with straight solder connection

M12 panel feed-through, rear mounting



Key Commercial Data

Packing unit	20 STK
GTIN	 4 046356 504591

Technical data

Ambient conditions

Ambient temperature (operation)	-40 °C ... 85 °C
Degree of protection	IP67 (When plugged in)

General

Rated current at 40°C	0.5 A
Rated voltage	50 V AC 60 V DC
Rated surge voltage	1.5 kV
Number of positions	8
Insulation resistance	> 100 MΩ
Signal type/category	Ethernet CAT6 _A
Overvoltage category	III
Degree of pollution	3
Connection method	THR solder connection
Insertion/withdrawal cycles	≥ 100

Material

Flush-type socket - SACC-DSIV-FS-8CON-L180-10G SCO - 1440669

Technical data

Material

Flammability rating according to UL 94	V0
Contact material	CuZn
Contact surface material	Ni/Au
Contact carrier material	PPA
Material of grip body	Zinc die-cast, nickel-plated
Material, knurls	Zinc die-cast, nickel-plated
Material	Zinc die-cast (nickel-plated)
Sealing material	EPDM

Standards and Regulations

Flammability rating according to UL 94	V0
----------------------------------------	----

Classifications

eCl@ss

eCl@ss 4.0	27140815
eCl@ss 4.1	27140815
eCl@ss 5.0	27143423
eCl@ss 5.1	27143423
eCl@ss 6.0	27279220
eCl@ss 7.0	27440103
eCl@ss 8.0	27440103

ETIM

ETIM 2.0	EC001297
ETIM 3.0	EC002061
ETIM 4.0	EC002061
ETIM 5.0	EC002061

UNSPSC

UNSPSC 6.01	31251501
UNSPSC 7.0901	31251501
UNSPSC 11	31251501
UNSPSC 12.01	31251501
UNSPSC 13.2	39121413

Approvals

Approvals

Approvals

UL Recognized / cUL Recognized / EAC / EAC / cULus Recognized

Flush-type socket - SACC-DSIV-FS-8CON-L180-10G SCO - 1440669

Approvals

Ex Approvals

Approvals submitted

Approval details

UL Recognized	
Nominal current I _N	0.5 A
Nominal voltage U _N	60 V

cUL Recognized	
Nominal current I _N	0.5 A
Nominal voltage U _N	60 V

EAC

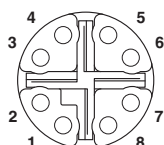
EAC

cULus Recognized	
------------------	--

Drawings

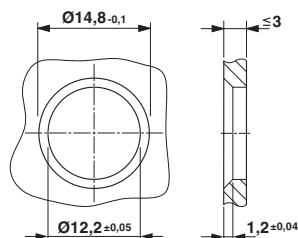
Flush-type socket - SACC-DSIV-FS-8CON-L180-10G SCO - 1440669

Schematic diagram



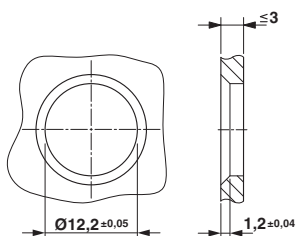
M12 socket pin assignment, 8-pos, view of socket side

Dimensional drawing



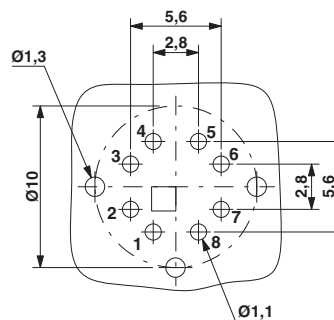
Housing cut-out for two-part M12 flush-type connectors with THR and wave soldering connection, version 1

Dimensional drawing



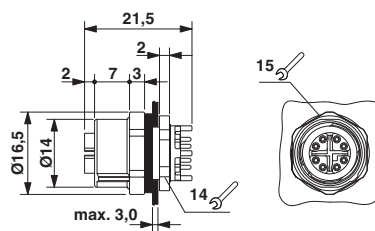
Housing cut-out for two-part M12 flush-type connectors with THR and wave soldering connection, version 2

Drilling diagram



Soldering pad geometry

Dimensional drawing



M12 flush-type socket



Automatización Eléctrica
Especialistas en Automatización

Below is a list of articles with direct links to our shop Electric Automation Network where you can see:

- Quote per purchase volume in real time.
- Online documentation and datasheets of all products.
- Estimated delivery time enquiry in real time.
- Logistics systems for the shipment of materials almost anywhere in the world.
- Purchasing management, order record and tracking of shipments.

To access the product, [click on the green button.](#)

Product	Code	Reference	Product link
Flush-type socket, CAT6A, Ethernet, 8-pos., M12 SPEEDCON, rear/screw mounting with M12 fastening thread, with straight solder connection	1440669	SACC-DSIV-FS-8CON-L180-10G SCO	Buy on EAN