



Automatización Eléctrica
Especialistas en Automatización

At the end of this document you will find links to products related to this catalog. You can go directly to our shop by clicking [HERE](#). [HERE](#)

Housing - HC-D25-SML-57/O1PG21 - 1416390

Please be informed that the data shown in this PDF Document is generated from our Online Catalog. Please find the complete data in the user's documentation. Our General Terms of Use for Downloads are valid (<http://phoenixcontact.com/download>)



Box mounting bases D25, With single locking latch, Material: Aluminum die-cast, Cable outlets: 1, Left (view of the opened single locking latch), Height: 57 mm, Cable gland: none, Gland: Yes, 1x Pg21

Key Commercial Data

Packing unit	10 STK
GTIN	 4 055626 072517

Technical data

Dimensions

Height	57 mm
Width	50 mm
Length	109.5 mm

Ambient conditions

Degree of protection of housing (IP)	IP65
Ambient temperature (operation)	-40 °C ... 125 °C

General

Note	For contact inserts HC-D25, A16
Size	D25
Housing type	Box mounting bases
Locking type	With single locking latch
No. of cable outlets	1
Cable exit	Left (view of the opened single locking latch)
Screw connection	none
Type of the screw connection	1x Pg21
Housing material	Aluminum die-cast
Housing surface material	Powder-coated, gray
Material lock	Steel, galvanized

Housing - HC-D25-SML-57/O1PG21 - 1416390

Classifications

eCl@ss

eCl@ss 5.1	27143424
eCl@ss 8.0	27440202
eCl@ss 9.0	27440202

ETIM

ETIM 5.0	EC000437
----------	----------

Approvals

Approvals

Approvals

EAC / GL

Ex Approvals

Approvals submitted

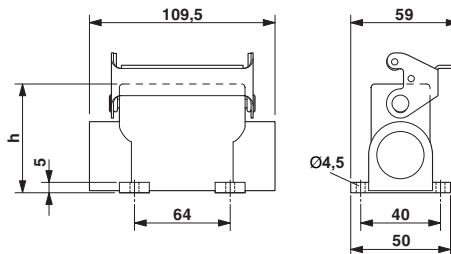
Approval details

EAC

GL

Drawings

Dimensional drawing



Phoenix Contact 2016 © - all rights reserved
<http://www.phoenixcontact.com>

PHOENIX CONTACT GmbH & Co. KG
Flachsmarktstr. 8
32825 Blomberg
Germany
Tel. +49 5235 300
Fax +49 5235 3 41200
<http://www.phoenixcontact.com>



Below is a list of articles with direct links to our shop Electric Automation Network where you can see:

- Quote per purchase volume in real time.
- Online documentation and datasheets of all products.
- Estimated delivery time enquiry in real time.
- Logistics systems for the shipment of materials almost anywhere in the world.
- Purchasing management, order record and tracking of shipments.

To access the product, [click on the green button.](#)

Product	Code	Reference	Product link
Box mounting bases D25, With single locking latch, Material: Aluminum die-cast, Cable outlets: 1, Left (view of the opened single locking latch), Height: 57 mm, Cable gland: none, Gland: Yes, 1x Pg21	1416390	HC-D25-SML-57/O1PG21	Buy on EAN