



**Automatización Eléctrica**  
Especialistas en Automatización

At the end of this document you will find links to products related to this catalog. You can go directly to our shop by clicking HERE. [HERE](#)

## Housing - HC-ADV-B24-HHWH-1TGM40-PL - 1404238

Please be informed that the data shown in this PDF Document is generated from our Online Catalog. Please find the complete data in the user's documentation. Our General Terms of Use for Downloads are valid (<http://phoenixcontact.com/download>)



HEAVYCON ADVANCE B24 sleeve housing, with screw locking (Allen screw), plastic, height: 100 mm, with 1 x M40 thread, straight cable outlet

### Why buy this product

- Integrated screw connection
- Lower costs than metal version
- Can also be used without panel mounting base
- Labeling option using 9 x 20 mm marking label
- Low weight
- Lower risk of condensation
- Both contact insert PE sheets are connected by means of a metal frame integrated in the sleeve housing
- Capacitive PE, even when connected at an angle
- Completely corrosion-resistant
- Halogen-free plastic
- Impact test according to IK 08

### Key Commercial Data

Packing unit	1 STK
GTIN	 4 046356 682084

### Technical data

#### Dimensions

Height	95 mm
Width	57 mm
Length	152 mm
Wrench size, union nut	36 mm
External cable diameter	19 mm ... 28 mm
Length of the assembly cutout	112 mm
Width of the assembly cutout	35 mm

#### Ambient conditions

Degree of protection of housing (IP)	IP66
--------------------------------------	------

# Housing - HC-ADV-B24-HHWH-1TGM40-PL - 1404238

## Technical data

### Ambient conditions

	IP68 (0.2 bar/24 h)
Degree of protection of housing (NEMA)	4 (UL50e / NEMA 250)
	4X (UL50e / NEMA 250)
	6P (UL50e / NEMA 250)
	12 (UL50e / NEMA 250)
Ambient temperature (operation)	-40 °C ... 100 °C

### General

Note	For contact inserts HC-B24, BB46, D64, DD108, M, K, HV10-I-PT, HV 10-E...C
Size	B24
Housing type	Sleeve housing
Color	black
Locking type	Screw locking
Torque	3 Nm (Locking screw)
Fixing screws	M6 (screw head: 5 mm Allen screw)
No. of cable outlets	1
Cable exit	straight
Screw connection	with
Type of the screw connection	1x M40
Housing material	Polyamide
Seal material	NBR
Cable seal material	NBR
Material lock	Stainless steel
Material of locking screw	High-grade steel
Flammability rating according to UL 94	V0
Assembly instructions	M6 locking screw, with 5 mm Allen screw head

### Standards and Regulations

Flammability rating according to UL 94	V0
--	----

## Classifications

### eCl@ss

eCl@ss 4.0	27140816
eCl@ss 4.1	27140816
eCl@ss 5.0	27143424
eCl@ss 5.1	27143424
eCl@ss 6.0	27143424
eCl@ss 7.0	27440209
eCl@ss 8.0	27440202
eCl@ss 9.0	27440202

## Housing - HC-ADV-B24-HHWH-1TGM40-PL - 1404238

### Classifications

#### ETIM

ETIM 3.0	EC000516
ETIM 4.0	EC000437
ETIM 5.0	EC000437

#### UNSPSC

UNSPSC 6.01	31261502
UNSPSC 7.0901	31261502
UNSPSC 11	31261502
UNSPSC 12.01	31261502
UNSPSC 13.2	31261502

### Approvals

#### Approvals

---

Approvals

EAC / GL

---

Ex Approvals

---

Approvals submitted

---

#### Approval details

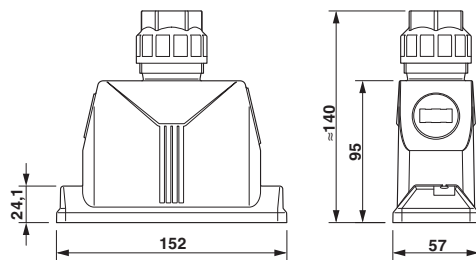
EAC
-----

GL
----

### Drawings

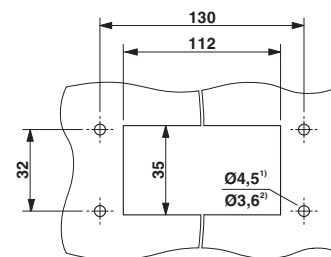
## Housing - HC-ADV-B24-HHWH-1TGM40-PL - 1404238

Dimensional drawing



Dimensional drawing

Dimensional drawing



Mounting cutout

- 1) when a standard M4 screw is used
- 2) when self-tapping screws are used (Torx® 20, M4)

Phoenix Contact 2016 © - all rights reserved  
<http://www.phoenixcontact.com>

PHOENIX CONTACT GmbH & Co. KG  
Flachsmarktstr. 8  
32825 Blomberg  
Germany  
Tel. +49 5235 300  
Fax +49 5235 3 41200  
<http://www.phoenixcontact.com>

Below is a list of articles with direct links to our shop Electric Automation Network where you can see:

- Quote per purchase volume in real time.
- Online documentation and datasheets of all products.
- Estimated delivery time enquiry in real time.
- Logistics systems for the shipment of materials almost anywhere in the world.
- Purchasing management, order record and tracking of shipments.

To access the product, [click on the green button.](#)

Product	Code	Reference	Product link
HEAVYCON ADVANCE B24 sleeve housing, with screw locking (Allen screw), plastic, height: 100 mm, with 1 x M40 thread, straight cable outlet	1404238	HC-ADV-B24-HHWH-1TGM40-PL	<a href="#">Buy on EAN</a>