



**Automatización Eléctrica**  
Especialistas en Automatización

At the end of this document you will find links to products related to this catalog. You can go directly to our shop by clicking [HERE](#). [HERE](#)

## Cable sleeve - CES-LTPG-GY-31 - 0801705

Please be informed that the data shown in this PDF Document is generated from our Online Catalog. Please find the complete data in the user's documentation. Our General Terms of Use for Downloads are valid (<http://phoenixcontact.com/download>)


Large, slotted cable sleeves suitable for cables with a diameter of 30 ... 31 mm, material: SEBS



### Product Description

Slotted sleeves for accommodating pre-assembled cables and lines with a diameter of 30 ... 31 mm, can be used in CES sealing frames. When fitted, the sleeves also ensure strain relief according to DIN EN 50262.

### Key Commercial Data

Packing unit	10 STK
GTIN	 4 046356 675079

### Technical data

#### Dimensions

External cable diameter	1x 30 mm ... 31 mm
Length	53 mm
Width	39 mm
Height	17 mm

#### Ambient conditions

Degree of protection	IP54 (for sealing frames with screw locking. IP44 sealing frames with locking latch.)
Ambient temperature (operation)	-40 °C ... 80 °C (static)

#### General

Product description	Slotted sleeves for accommodating pre-assembled cables and lines with a diameter of 30 ... 31 mm, can be used in CES sealing frames. When fitted, the sleeves also ensure strain relief according to DIN EN 50262.
No. of conductors	1
Material	SEBS
Flammability rating according to UL 94	V0
Color	gray

#### Standards and Regulations

Connection in acc. with standard	CUL
----------------------------------	-----

# Cable sleeve - CES-LTPG-GY-31 - 0801705

## Technical data

### Standards and Regulations

Flammability rating according to UL 94	V0
--	----

## Classifications

### eCl@ss

eCl@ss 4.0	27081002
eCl@ss 4.1	27081002
eCl@ss 5.0	27081002
eCl@ss 5.1	27081002
eCl@ss 6.0	27081002
eCl@ss 7.0	27081002
eCl@ss 8.0	27069220

### ETIM

ETIM 3.0	EC000879
ETIM 4.0	EC000451
ETIM 5.0	EC000451

### UNSPSC

UNSPSC 6.01	30212109
UNSPSC 7.0901	39121708
UNSPSC 11	39121708
UNSPSC 12.01	39121708
UNSPSC 13.2	39121708

## Approvals

### Approvals

---

#### Approvals

UL Recognized / cUL Recognized / GL / cULus Recognized

---

#### Ex Approvals

---

#### Approvals submitted

---

### Approval details

## Cable sleeve - CES-LTPG-GY-31 - 0801705

### Approvals

UL Recognized

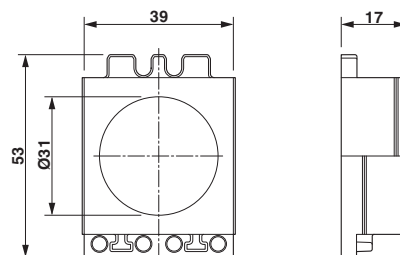
cUL Recognized

GL

cULus Recognized

### Drawings

Dimensional drawing



Dimensional drawing

Phoenix Contact 2016 © - all rights reserved  
<http://www.phoenixcontact.com>

PHOENIX CONTACT GmbH & Co. KG  
Flachsmarktstr. 8  
32825 Blomberg  
Germany  
Tel. +49 5235 300  
Fax +49 5235 3 41200  
<http://www.phoenixcontact.com>



Below is a list of articles with direct links to our shop Electric Automation Network where you can see:

- Quote per purchase volume in real time.
- Online documentation and datasheets of all products.
- Estimated delivery time enquiry in real time.
- Logistics systems for the shipment of materials almost anywhere in the world.
- Purchasing management, order record and tracking of shipments.

To access the product, [click on the green button.](#)

<b>Product</b>	<b>Code</b>	<b>Reference</b>	<b>Product link</b>
Large, slotted cable sleeves suitable for cables with a diameter of 30 ... 31 mm, material: SEBS	0801705	CES-LTPG-GY-31	<a href="#">Buy on EAN</a>