



Automatización Eléctrica

Especialistas en Automatización

At the end of this document you will find links to products related to this catalog. You can go directly to our shop by clicking HERE. [HERE](#)



OS32C Safety Laser Scanner

- Type 3 Safety laser scanner complies with IEC61496-1/-3.
- 70 sets of safety zone and warning zone combinations are available, supporting complicated changes in working environments.
- A safety radius up to 3 m and warning zone(s) radius up to 10 m can be set.
- 8 Individual sector indicators and various LED indications allow the user to determine scanner status at a glance.
- Reference boundary monitoring function prevents unauthorized changes in the scanner position.
- Configurable minimum object resolution of 30, 40, 50 or 70 mm, for hand and arm detection applications

Ordering information

OS32C (Power cable is sold separately.)

Description	Order code
Back location cable entry	OS32C-BP
Side location cable entry ^{*1}	OS32C-SP1

^{*1} For OS32C-SP1, each connector is located on the left as viewed from the back of the I/O block.

Description	Remarks	Order code
Configuration tool	CD-ROM OS supported: Windows 2000/XP/Vista Windows 7	included

Note: The OS32C laser scanner may not be sold or imported into or used in the Federal Republic of Germany prior to December 1, 2013.

Mounting brackets

Type	Remarks	Order code
Bottom/side mounting bracket	Bottom/side mounting bracket x 1, unit mounting screws x 4 sets	OS32C-BKT1
XY axis rotation mounting bracket	XY axis rotation mounting bracket x 1, unit mounting screws x 6 sets, bracket mounting screws x 1 set (must be used with OS32C-BKT1)	OS32C-BKT2

Note: For a full line-up of accessories and spare parts, please refer to the Z298-E1... datasheet.

Specifications

Sensors

Sensor type	Type 3 Safety laser scanner
Safety category	Category 3, performance level d (ISO13849-1: 2006)
Detection capability	Configurable; Non-transparent with a diameter of 30, 40, 50 or 70 mm (1.8% reflectivity or greater)
Monitoring zone	Monitoring zone set count: (Safety zone + 2 warning zones) x 70 sets
Operating range	Safety Zone: 3.0 m (min. obj. resolution of 50 mm or 70 mm) 2.5 m (min. obj. resolution of 40 mm) 1.75 m (min. obj. resolution of 30 mm) Warning Zone: 10.0 m
Detection angle	270°
Response time	Response time from ON to OFF: From 80 ms (2 scans) to 680 ms (up to 17 scans) Response time from OFF to ON: Response time from ON to OFF + 100 ms to 60 s (configurable)
Line voltage	24 VDC +25%/-30% (ripple p-p 2.5 V max.)
Power consumption	Normal operation: 5 W max., 4 W typical (without output load) ^{*1} Standby mode: 3.75 W (without output load)
Safety output (OSSD)	PNP transistor x 2, load current of 250 mA max., residual voltage of 2 V max., load capacity of 2.2 µf max., leak current of 1 mA max. ^{*1,*2,*3}
Auxiliary output (Non-Safety)	NPN/PNP transistor x 1, load current of 100 mA max., residual voltage of 2 V max., leak current of 1 mA max. ^{*2,*3,*4}
Warning output (Non-Safety)	NPN/PNP transistor x 1, load current of 100 mA max., residual voltage of 2 V max., leak current of 1 mA max. ^{*2,*3,*4}
Output operation mode	Auto start, start interlock, start/restart interlock
Input	External Device Monitoring (EDM) ON: 0 V short (input current of 50 mA), OFF: Open
	Start ON: 0 V short (input current of 20 mA), OFF: Open
	Zone select ON: 24 V short (input current of 5 mA), OFF: Open
	Stand-by ON: 24 V short (input current of 5 mA), OFF: Open
Connection type	Power cable: 18-pin mini-connector (pigtail) Communication cable: M12, 4-pin connector
Connection with PC	Communication: Ethernet
Indicators	RUN indicator: Green, STOP indicator: Red, Interlock indicator: Yellow, Warning output indicator: Orange, Status/diagnostic display: 2 x 7-segment LEDs, Intrusion indicators: Red LED x 8
Enclosure rating	IP65 (IEC60529)
Dimensions (WxHxD)	133.0 x 104.5 x 142.7 mm (except cable)
Weight (Main Unit only)	1.3 kg
Approvals	Certified by: TÜV Rheinland, UL Major Standards: IEC61496-1/-3 (Type 3), IEC61508 (SIL2), ISO13849-1:2008 (Category 3, Performance Level d), UL508, UL1998

^{*1} Rated current of OS32C is 1.025 A max. (OS32C 210 mA + OSSD A load + OSSD B load + auxiliary output load + warning output load + functional inputs). Where functional inputs are: EDM input ... 50 mA Start input ... 20 mA Standby input ... 5 mA Zone X input ... 5 mA x 8 (eight zone set select inputs)

^{*2} Output voltage is input voltage - 2.0 VDC.

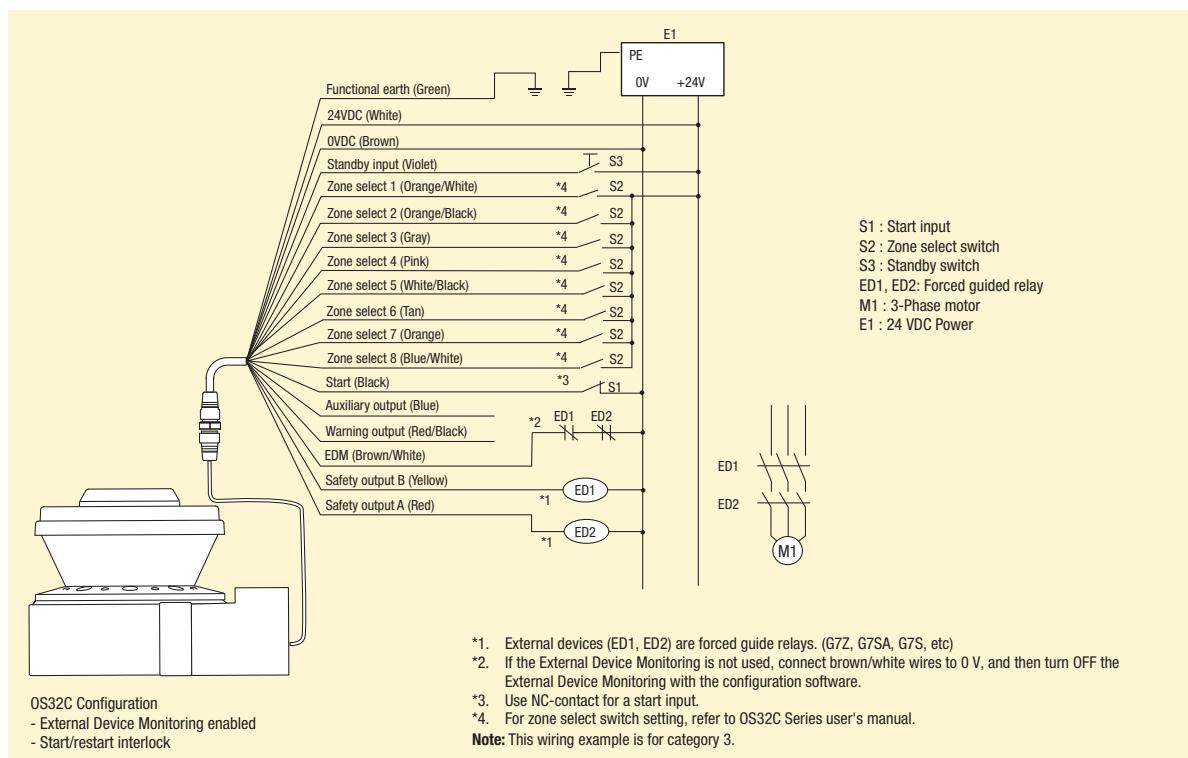
^{*3} Total consumption current of 2 OSSDs, auxiliary output, and warning output must not exceed 700 mA.

^{*4} Output polarity (NPN/PNP) is configurable via the configuration tool.

Connection

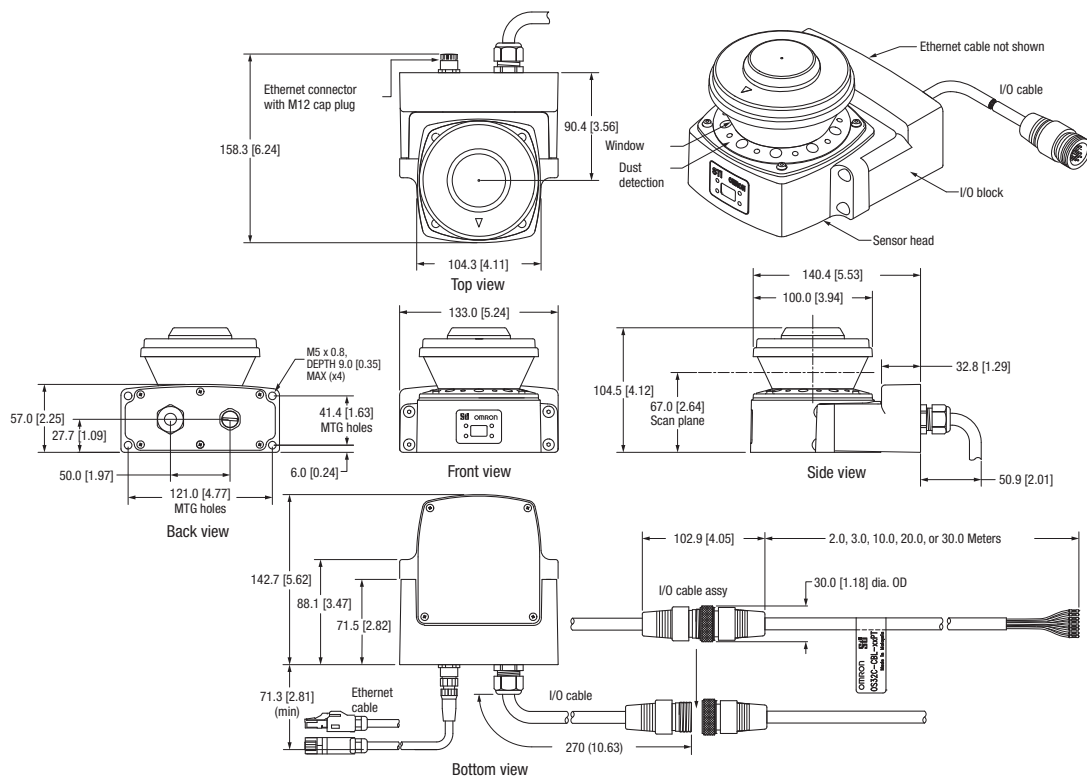
Basic connection with single OS32C unit

Category 3, performance level d (ISO13849-1)

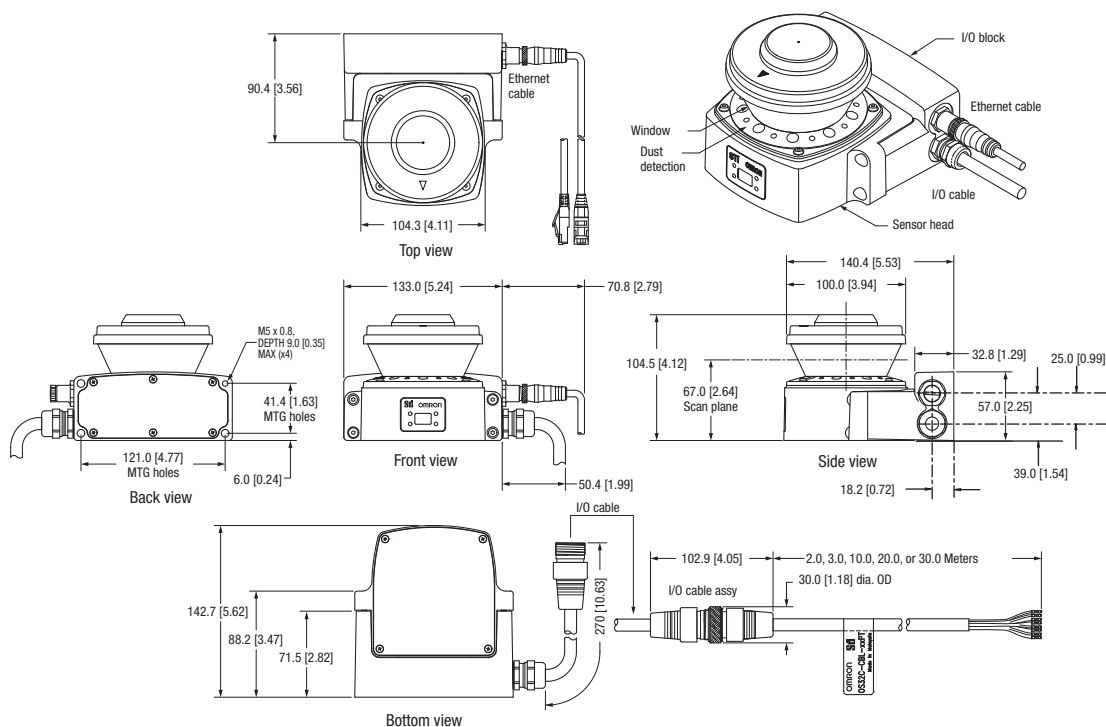


Dimensions

OS32C with back location cable entry - OS32C-BP



OS32C with side location cable entry - OS32C-SP1



Below is a list of articles with direct links to our shop Electric Automation Network where you can see:

- Quote per purchase volume in real time.
- Online documentation and datasheets of all products.
- Estimated delivery time enquiry in real time.
- Logistics systems for the shipment of materials almost anywhere in the world.
- Purchasing management, order record and tracking of shipments.

To access the product, click on the green button.

Product	Code	Reference	Product link
Industrial Career Final / Push, Push button PCB	141211	A3AA-91K1-00ER	Buy on EAN
Slim, miniature relay, SPST-NO, 5A	151306	G6D-1A 24DC	Buy on EAN
Photoelectric sensor, nickel-brass, retroreflective, 2m, DC, 3-wire, PNP, M18, M12 plug-in	131045		Buy on EAN
Advanced Sensors, Power cable Ionizer ZJ-BAS 2 connectors 2m	250537	ZJ-BAS-MC02B	Buy on EAN
Photoelectric sensor, stainless steel, diffuse, 100mm, DC, 3-wire, NPN, M18, M12 plug-in	131040		Buy on EAN
Advanced sensors, voltage adapter 100-240Vac ionizer ZJ-BAS	250531	ZJ-BAS-PS01	Buy on EAN
	157085		Buy on EAN
	157087		Buy on EAN