

The OMRON logo is displayed in a bold, blue, sans-serif font. The letters are thick and rounded, with the 'O' being a simple circle. The entire logo is set against a light yellow rectangular background.

Automatización Eléctrica
Especialistas en Automatización

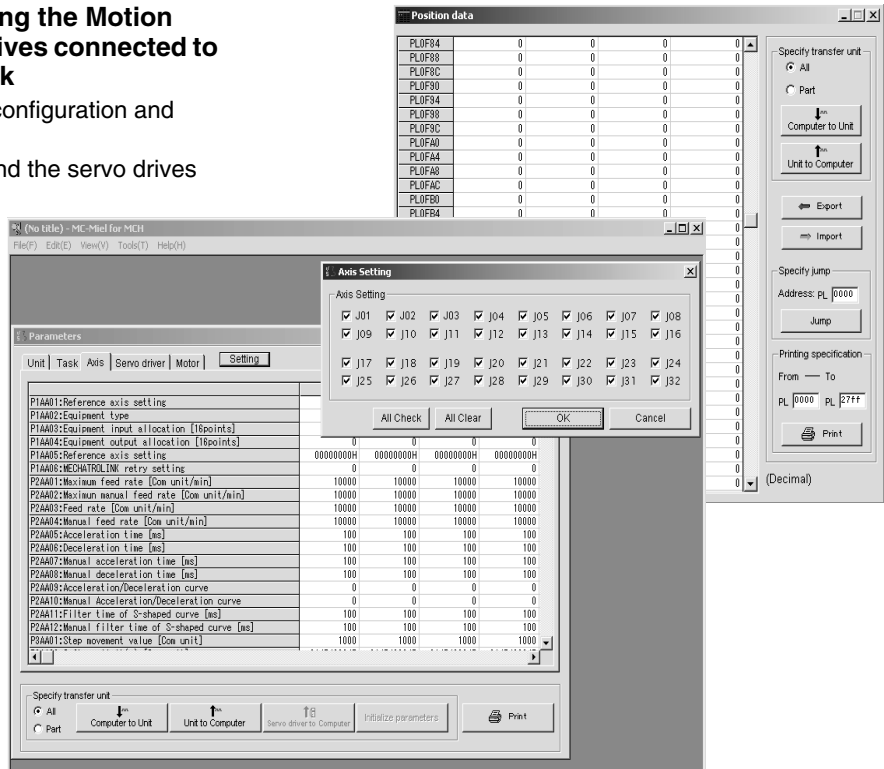
At the end of this document you will find links to products related to this catalog. You can go directly to our shop by clicking [HERE](#). [HERE](#)

Programming Software for Mechatrolink-II Motion Controllers

MCH-Tool

Programming tool for Programming the Motion Control Unit, and configuring all Drives connected to the MECHATROLINK-II motion link

- Access to all system programming, configuration and monitoring from one connecting point.
- Complete configuration of the MCH and the servo drives
- Programming in Basic type Motion Control language
- On-line Monitoring
- Imports CAM tables



Software

Specifications

Functions

System setting	Setting communication parameters
Data input	- Editing of system parameters
	- Programming in BASIC type Motion Control language
	- Load, save, delete parameter files, etc.
Test options/Online operation	- Imports CAM tables
	- Transfer Motion Controller unit data
	- On-line monitor
	- Transfer of Servo Drives parameter data

Operating Enviroment

Operating systems	Windows 2000/NT	
Processor	Pentium class at 300 Mhz or higher	
Memory requirements	Hard disk	100 MB free memory space
	RAM	64 MB min.
Screen	800x600 resolution or higher	
Peripheral connections	CD-ROM drive, serial port	

Compatible Units

	Specification
Motion Controllers	CS1W-MCH71

Ordering Information

Software

Description	Model
MCH-M1el	MOTION TOOLS CD

ALL DIMENSIONS SHOWN ARE IN MILLIMETERS.

To convert millimeters into inches, multiply by 0.03937. To convert grams into ounces, multiply by 0.03527.



Automatización Eléctrica
Especialistas en Automatización

Below is a list of articles with direct links to our shop Electric Automation Network where you can see:

- Quote per purchase volume in real time.
- Online documentation and datasheets of all products.
- Estimated delivery time enquiry in real time.
- Logistics systems for the shipment of materials almost anywhere in the world.
- Purchasing management, order record and tracking of shipments.

To access the product, [click on the green button.](#)

Product	Code	Reference	Product link
Motion Control Unit, Electronic cam profiles, axis synchronisation	157979	CS1W-MCH71	Buy on EAN