



Automatización Eléctrica

Especialistas en Automatización

At the end of this document you will find links to products related to this catalog. You can go directly to our shop by clicking HERE. [HERE](#)

Special beam clamp systems

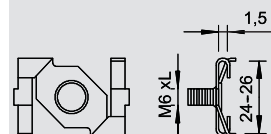


Visible rail terminal

| Type | Thread | Breaking load kN | Pack. pcs | Weight kg/100 pcs. | Item No. |
|---------------|--------|---------------------|--------------|-----------------------|------------------|
| TKD 9 | M6x9 | 0.22 | 100 | 1.100 | 1486 60 8 |
| TKD 16 | M6x16 | 0.22 | 100 | 1.200 | 1486 61 6 |
| TKD 25 | M6x25 | 0.22 | 100 | 1.400 | 1486 62 4 |
| TKD 38 | M6x38 | 0.22 | 100 | 1.700 | 1486 63 2 |

St Steel **ZD** Galvanised, Deltatone 500 /100 pc.

Rotary clamp fastening to ceiling profiles with threaded connection.

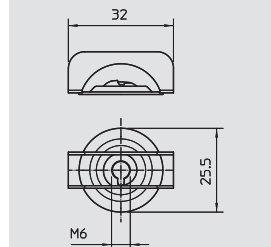


Locknut

| Type | Thread | Breaking load kN | Pack. pcs | Weight kg/100 pcs. | Item No. |
|--------------|--------|---------------------|--------------|-----------------------|------------------|
| TKD G | M6 | 0.22 | 100 | 0.540 | 1486 67 5 |

St Steel **ZD** Galvanised, Deltatone 500 /100 pc.

Disc nut for toolless, manual mounting.

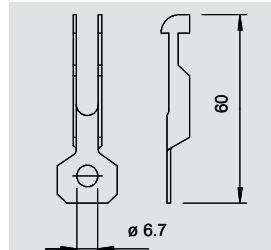


Profile ceiling suspensions

| Type | Bore hole Ø mm | Breaking load kN | Pack. pcs | Weight kg/100 pcs. | Item No. |
|--------------|-------------------|---------------------|--------------|-----------------------|------------------|
| TKT 7 | 7 | 0.45 | 100 | 0.900 | 1486 86 1 |

St Steel **ZD** Galvanised, Deltatone 500 /100 pc.

Push-through fastening for 7 mm drill holes and plate thicknesses of 0.8 to 2 mm, with opening to accept S hooks or bolt and nut.

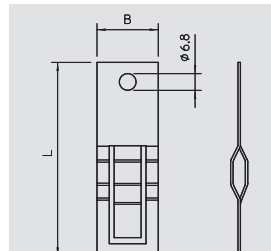


Plug-on bracket for ceiling profiles

| Type | Dimension B mm | Dimension L mm | with type | Pack. pcs | Weight kg/100 pcs. | Item No. |
|---------------|-------------------|-------------------|-----------|--------------|-----------------------|------------------|
| TKA 25 | 25 | 79 | — | 100 | 1.300 | 1486 68 2 |

St Steel **ZD** Galvanised, Deltatone 500 /100 pc.

Plug-on bracket for ceiling profiles, with drill hole for universal connection.

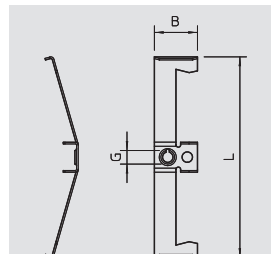


Mounting bracket on threaded rods

| Type | For threaded rod | Dimension B mm | Dimension L mm | with type | Dimension G mm | Breaking load kN | Pack. pcs | Weight kg/100 pcs. | Item No. |
|----------------------|------------------|-------------------|-------------------|-----------|-------------------|---------------------|--------------|-----------------------|------------------|
| TK GS M4 M8 | M4 - M8 | 19 | 82 | — | M6 | 0.22 | 100 | 0.890 | 1486 69 4 |
| TK GS M10 M12 | M10 - M12 | 26 | 120 | — | M6 | 0.22 | 100 | 1.810 | 1486 69 8 |

St Steel **ZD** Galvanised, Deltatone 500 /100 pc.

Sprung steel clamp for quick fastening to threaded rods or beams without welding or drilling.

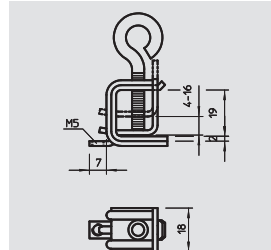


Beam clamp

| Type | Flange thickness mm | Shipping box pair | Pack. pair | Weight kg/100 pairs | Item No. |
|--------------|------------------------|----------------------|---------------|------------------------|------------------|
| 339 1 | 4-16 | 100 | 5 | 6.200 | 1408 51 8 |

St Steel /100 pairs

For rapid fastening on steel profiles during the mounting of cable tracks, clamp clips, luminaire suspensions, etc. A complete system consists of two beam clamps and a piece of C profile rail of any length, as well as two protective caps.





Below is a list of articles with direct links to our shop Electric Automation Network where you can see:

- Quote per purchase volume in real time.
- Online documentation and datasheets of all products.
- Estimated delivery time enquiry in real time.
- Logistics systems for the shipment of materials almost anywhere in the world.
- Purchasing management, order record and tracking of shipments.

To access the product, [click on the green button](#).

| Product | Code | Reference | Product link |
|--|---------|-----------|----------------------------|
| Visible rail terminal , M6x9mm, Galvanised, Deltatone 500, Steel, St | 1486608 | TKD 9 | Buy on EAN |
| Visible rail terminal , M6x16mm, Galvanised, Deltatone 500, Steel, St | 1486616 | TKD 16 | Buy on EAN |
| Visible rail terminal , M6x25mm, Galvanised, Deltatone 500, Steel, St | 1486624 | TKD 25 | Buy on EAN |
| Visible rail terminal , M6x38mm, Galvanised, Deltatone 500, Steel, St | 1486632 | TKD 38 | Buy on EAN |
| Locknut for visible rail terminal, M6, Galvanised, Deltatone 500, Steel, St | 1486675 | TKD G | Buy on EAN |
| Profile ceiling uncoupler with fastening hole 7 mm, 60mm, Galvanised, Deltatone 500, Steel, St | 1486861 | TKT | Buy on EAN |