

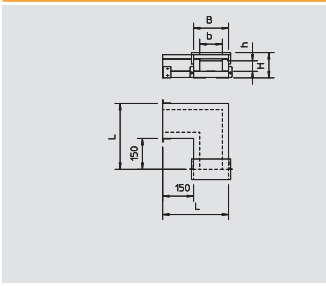


**Automatización Eléctrica**

Especialistas en Automatización

At the end of this document you will find links to products related to this catalog. You can go directly to our shop by clicking HERE. [HERE](#)

# Fire protection duct PYROLINE® Con S - BSKH 09



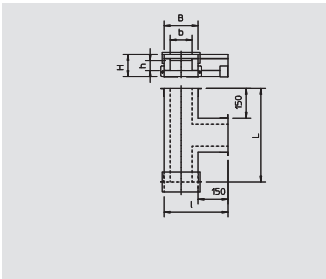
## 90° bend, internal height 105 mm

Type	Dimension h mm	Dimension b mm	Dimension H mm	Dimension B mm	Dimension L mm	Weight kg/100 pcs.	Item No.
<b>BSKH-FB091016</b>	105	160	165	220	370	920.000	<b>7215 61 4</b>
<b>BSKH-FB091026</b>	105	260	165	320	470	1,405.000	<b>7215 61 8</b>

Glass-fibre lightweight concrete

/pc.

90° bend for BSKH I90/E30, to DIN 4102 Part 11 and Part 12, for installation on OBO mounting systems. Fittings must be supported by additional brackets. Including mounted connector on both duct ends, 3x 1 m self-adhesive sealing strip and connecting bolts.



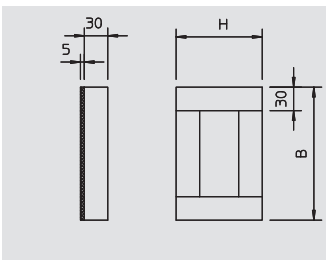
## T piece, internal height 105 mm

Type	Dimension h mm	Dimension b mm	Dimension H mm	Dimension B mm	Dimension L mm	Dimension I mm	Weight kg/100 pcs.	Item No.
<b>BSKH-FT091016</b>	105	160	165	220	520	370	1,180.000	<b>7215 64 3</b>
<b>BSKH-FT091026</b>	105	260	165	320	620	470	1,715.000	<b>7215 64 7</b>

Glass-fibre lightweight concrete

/pc.

T piece for BSKH I90/E30, to DIN 4102 Part 11 and Part 12, for installation on OBO mounting systems. Fittings must be supported by additional brackets. Including mounted connector on all duct ends, 3x 1 m self-adhesive sealing strip and connecting bolts.



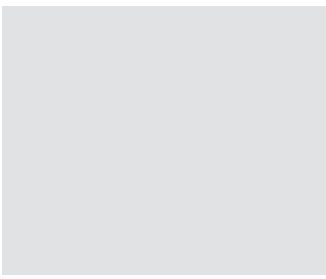
## End piece for internal height 105 mm

Type	Dimension B mm	Dimension H mm	Pack. pcs	Weight kg/100 pcs.	Item No.
<b>BSKH-E091016</b>	220	165	1	101.000	<b>7215 59 6</b>
<b>BSKH-E091026</b>	320	165	1	142.000	<b>7215 59 8</b>

Glass-fibre lightweight concrete

/pc.

End piece for fire protection duct BSKH I90/E30  
Including bolts and sealing strip.



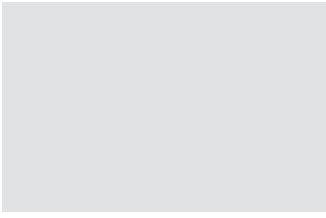
## Wall connection collar I90 for internal height 105 mm

Type	Pack. pcs	Weight kg/100 pcs.	Item No.
<b>BSKH-K1016</b>	1	87.000	<b>7215 58 2</b>
<b>BSKH-K1026</b>	1	105.000	<b>7215 58 6</b>

Glass-fibre lightweight concrete

/pc.

Wall connection collar for BSKH, consisting of four single plates, to double the insulation for wall penetrations. Incl. fastening material Only for I90 classification.



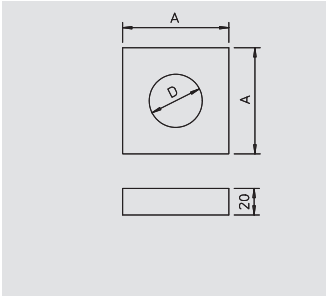
## Sealing strip I90/E30

Type	Dimension mm	Length m	Weight kg/100 pcs.	Item No.
<b>BSK-D0930</b>	5 x 30	15	37.500	<b>7215 42 3</b>

Foam

/pc.

Self-adhesive sealing strip for BSK I90/E30 and BSKH I90/E30



## Doubler I90

Type	Dimension A mm	Dimension D mm	Pack. pcs	Weight kg/100 pcs.	Item No.
<b>BSK-A0908</b>	80	40	1	10.000	<b>7215 45 2</b>
<b>BSK-A0910</b>	100	60	1	14.000	<b>7215 45 8</b>

Glass-fibre lightweight concrete

/pc.

Doubler for cable routing for BSK I90 and for BSKH I90:  
BSK-A0908 for duct heights to 95 mm,  
BSK-A0910 for duct heights from 110 mm.  
Including fastening screws.





Below is a list of articles with direct links to our shop Electric Automation Network where you can see:

- Quote per purchase volume in real time.
- Online documentation and datasheets of all products.
- Estimated delivery time enquiry in real time.
- Logistics systems for the shipment of materials almost anywhere in the world.
- Purchasing management, order record and tracking of shipments.

To access the product, [click on the green button](#).

<b>Product</b>	<b>Code</b>	<b>Reference</b>	<b>Product link</b>
Sealing strips for BSK I90/E30, 5x30mm, Grey, Foam	7215423	BSK-D0930	<a href="#">Buy on EAN</a>
Doubler for BSK I90, 80x80x20, Grey, Glass-fibre lightweight concrete	7215452	BSK-A0908	<a href="#">Buy on EAN</a>
Doubler for BSK I90, 100x100x20, Grey, Glass-fibre lightweight concrete	7215458	BSK-A0910	<a href="#">Buy on EAN</a>