

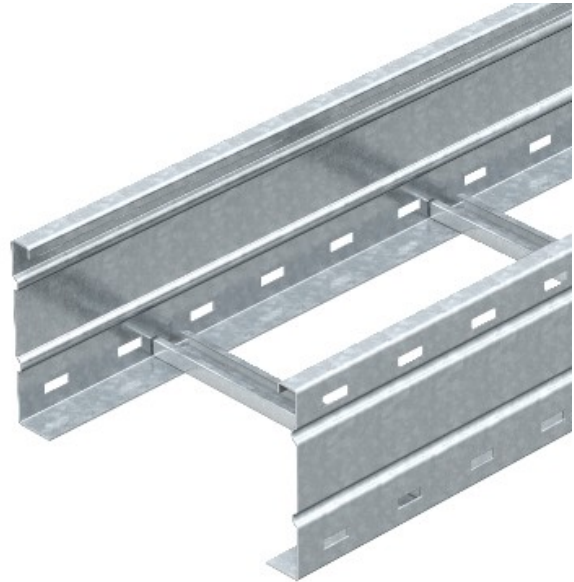


Electric Automation
Automation specialists

Reference: WKLG 1620 FT
Code: 6227120

Wide clamping cable conductor
perforated side rail, 160x200x6000, Hot-
dip galvanised, DIN EN ISO 1461, Steel,
St

[Buy it at Electric Automation Network](#)



WKLG 160 = wide span cable latd>