

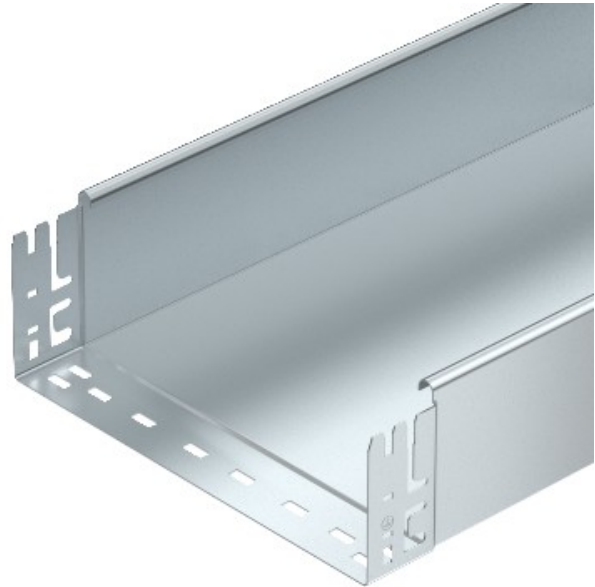


Electric Automation
Automation specialists

Reference: SKSMU 160 FT
Code: 6059865

Cable tray SKSMU unperf. with quick connector, 110x600x3050, Hot-dip galvanised, DIN EN ISO 1461, Steel, St

Buy it at [Electric Automation Network](#)



Unperforated cable tray with quick connection system, including all the relevant connection components for time-saving and economic installation.

The stock length is 3,050 mm, the usable length when combined is 3,000 mm

The spring element FED 60 can be ordered separately as an accessory part (spare) for the Magic cable trays with a side height of 60 mm, 85 mm and 110 mm under the article number 6068859.

The continuous equipotential bonding is guaranteed without atd>VDE-tested cable tray system.