

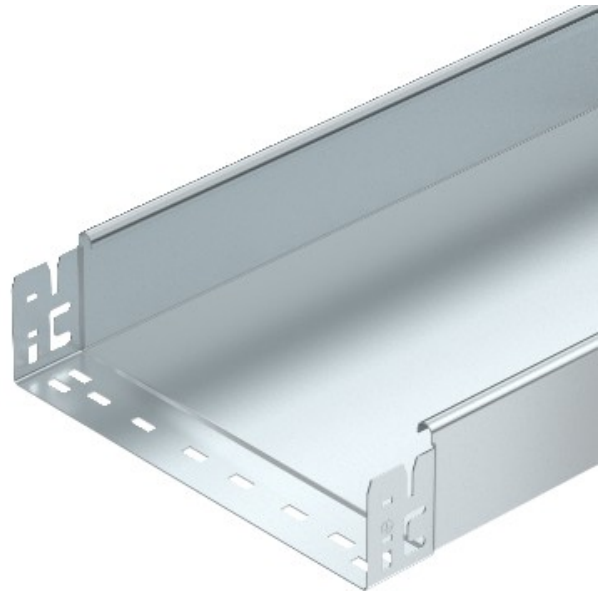


Electric Automation
Automation specialists

Reference: SKSMU 850 FT
Code: 6059789

Cable tray SKSMU unperf. with quick connector, 85x500x3050, Hot-dip galvanised, DIN EN ISO 1461, Steel, St

Buy it at [Electric Automation Network](#)



SKSMU 85 = Heavy-duty Magic cable tray system, unperforated, with 85 mm side height.