

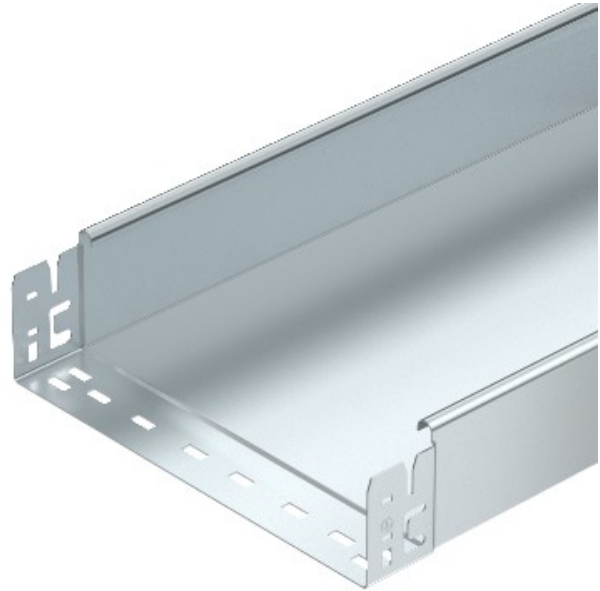


Electric Automation
Automation specialists

Reference: SKSMU 850 FS
Code: 6059772

Cable tray SKSMU unperf. with quick connector, 85x500x3050, Strip-galvanised, DIN EN 10147, Steel, St

Buy it at [Electric Automation Network](#)



SKSMU 85 = Heavy-duty Magic cable tray system, unperforated, with 85 mm side height.