

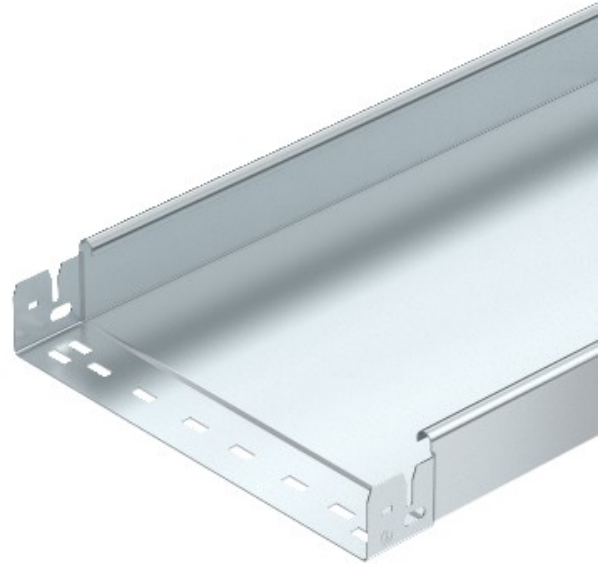


Electric Automation
Automation specialists

Reference: SKSMU 660 FT
Code: 6059717

Cable tray SKSMU unperf. with quick connector, 60x600x3050, Hot-dip galvanised, DIN EN ISO 1461, Steel, St

Buy it at [Electric Automation Network](#)



SKSMU 60 = Heavy-duty Magic cable tray system, unperforated, with 60 mm side height.