

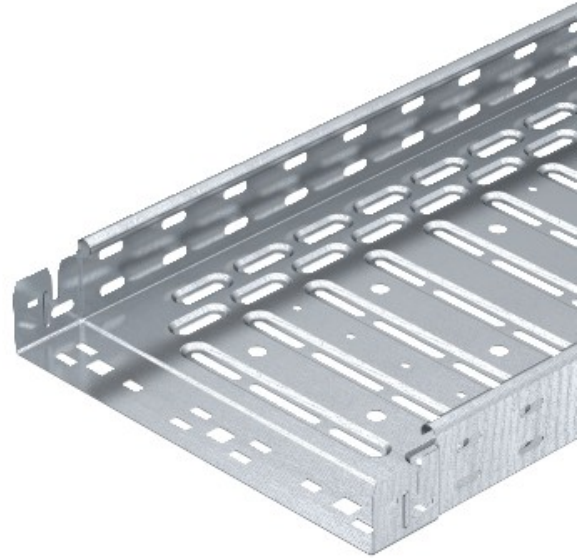


Electric Automation
Automation specialists

Reference: RKSM 610 FS
Code: 6047611

Cable tray RKSM Magic, quick connector,
60x100x3050, Strip-galvanised, DIN EN
10147, Steel, St

Buy it at [Electric Automation Network](#)



Cable tray with quick connection system, including all the relevant connection components for time-saving and economic installation, with beaded straight base perforation, 7 x 20 mm, for bracket mounting and, from the width. The stock length is 3050 mm, the usable length when combined is 3000 mm.

The spring element FED 60 can be ordered separately as an accessory part (spare) for the cable tray RKS Magic with a side height of 60 mm under the article number 6068859.

The continuous equipotential bonding is guaranteed without additional