

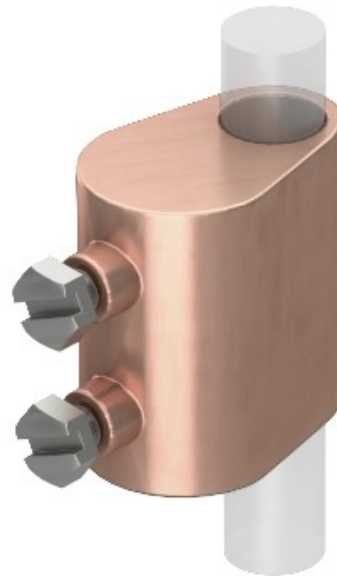


**Electric Automation**  
Automation specialists

Reference: 223 DIN MS  
Code: 5335256

Separating piece , 8-10mmx16, Copper-plated, Die-cast zinc, Zn

Buy it at [Electric Automation Network](#)



- For fitting round conductors Rd 8-10 to ground insertion rods Rd 16
- Including 2 hexagonal bolts, high-grade stainless steel (V2A)
- Conforms to the requirements according to DIN VDE 0185-305 (IEC 62305)