

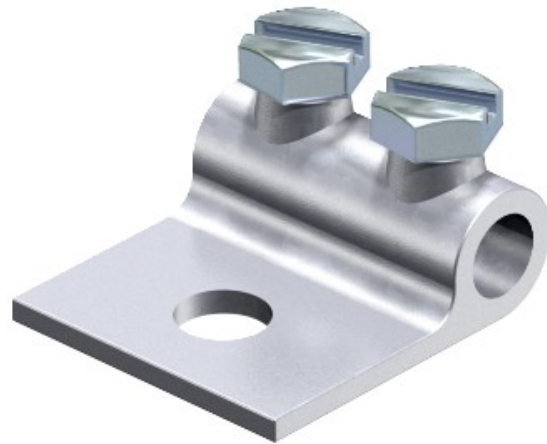


Electric Automation
Automation specialists

Reference: 319 10
Code: 5325315

Clamping shoe , 10mm, Hot-dip galvanised, DIN 267, Teil 10, Cast iron, TG

[Buy it at Electric Automation Network](#)



- With \varnothing 11 mm attaching hole
- 2 hexagonal bolts M8 x 16
- Bolts hot-dip galvanised steel and clamping element hot dipped galvanised cast steel