

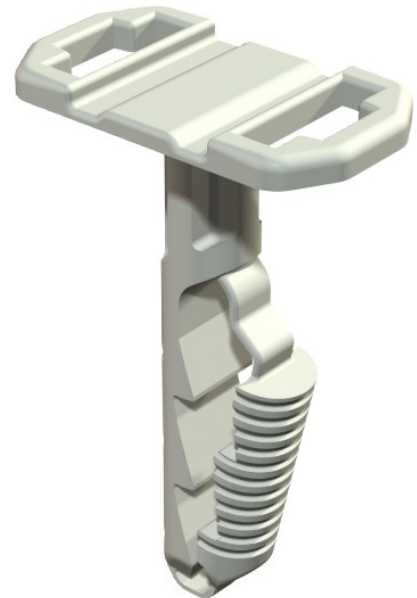


Electric Automation
Automation specialists

Reference: 910 STK 6x30
Code: 2351609

Push-fit plug for cable ties, 6x30mm,
Light grey, 7035, Polyamide, PA

[Buy it at Electric Automation Network](#)



The push-fit anchor can accept a cable tie (type 550 or 555) up to 9 mm wide, which can be used to install several cables and pipes.

Suitable for concrete, lime sand and brickwork as solid brick. Use in gas concrete masonry is possible, but reduced load capacities must be expected.