



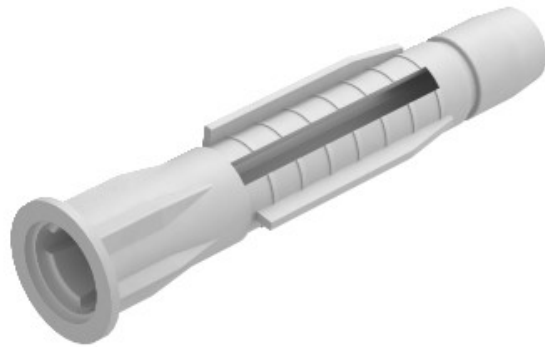
Electric Automation
Automation specialists

Reference: 910 MZ 12x70

Code: 2347570

Multi-purpose plug , 12x70mm, Grey-white, 9002, Polyamide, PA

Buy it at [Electric Automation Network](#)



Also suitable as a cavity anchor, with collars to prevent slipping. 3 tabs take up the torque.

Required minimum bolt length = anchor length + component thickness + 1 x bolt \varnothing .
Withdrawal force applies to wood screws of the largest bolt diameter in concrete of class B25.

Our safety value recommendation: 5x