



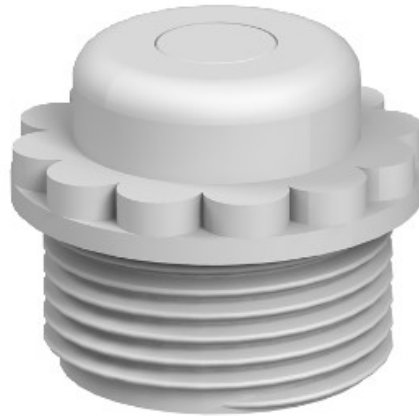
**Electric Automation**  
Automation specialists

Reference: 90 M20 GE

Code: 2032382

Screw-in nipple closed version, M20,  
Light grey, 7035, Polyethylene, PE

Buy it at [Electric Automation Network](#)



With perforation membranes, the opening D is pre-marked, but closed.

Grip seal to screw into metric thread to IEC 423.

With self-sealing cone at the end of the thread, therefore no connection thread sealing ring required.

Protection rating achievable with careful mounting: IP54.