

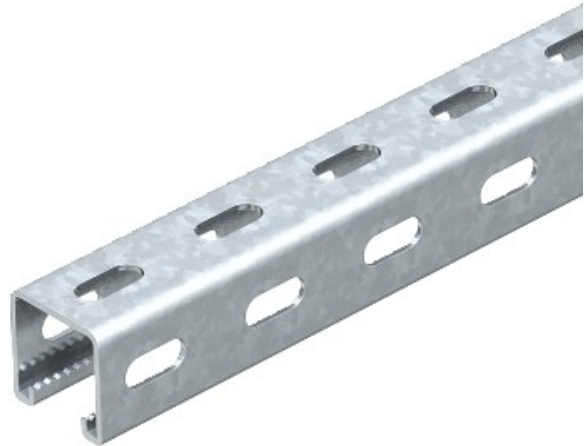


Electric Automation
Automation specialists

Reference: MS 41 LS1M 2 V2A
Code: 1123014

Profile rails side perforation, slot 22 mm,
1000x41x41, Stainless steel, grade 304,
VA, 1.4301

[Buy it at Electric Automation Network](#)



Static values:

$A = 2,44837 \text{ cm}^2$

$I_y = 5,17636 \text{ cm}^4$

$I_z = 7,556 \text{ cm}^4$

$W_y = 2,51257 \text{ cm}^3$

$W_z = 2,68608 \text{ cm}^3$