

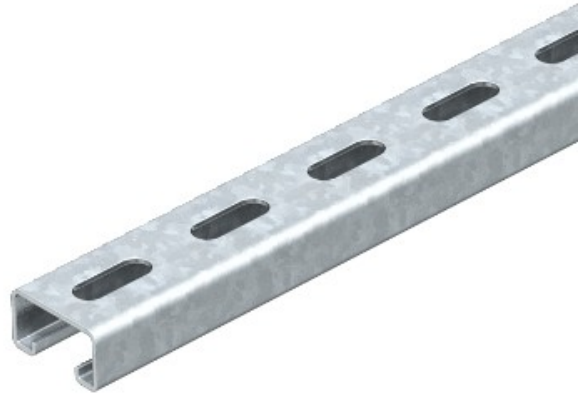


Electric Automation
Automation specialists

Reference: MS 21 L 6M V2A
Code: 1122929

Profile rails perforated, slot width 22 mm, 6000x41x21, Stainless steel, grade 304, VA, 1.4301

Buy it at [Electric Automation Network](#)



Static values:

$A = 1,64837 \text{ cm}^2$

$I_y = 0,952339 \text{ cm}^4$

$I_z = 4,5113 \text{ cm}^4$

$W_y = 0,888299 \text{ cm}^3$

$W_z = 2,20087 \text{ cm}^3$