

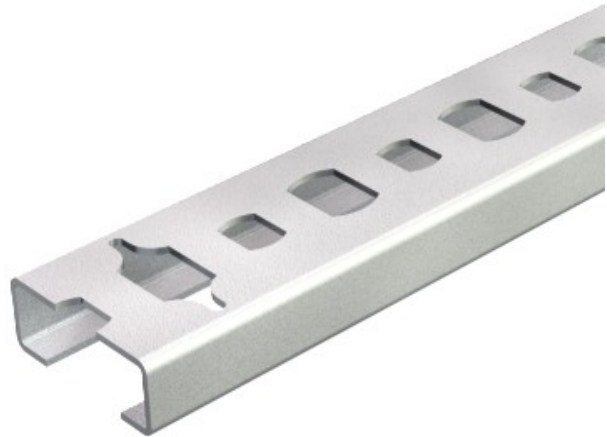


**Electric Automation**  
Automation specialists

Reference: 2060 2M AB FS  
Code: 1106120

Profile rails perforated, slot width 11 mm, 2000x20x8, Strip-galvanised, DIN EN 10147, Steel, St

[Buy it at Electric Automation Network](#)



Static values:

$A = 0.2400 \text{ cm}^2$

$I_y = 0.0218 \text{ cm}^4$

$I_z = 0.1673 \text{ cm}^4$

$W_y = 0.0510 \text{ cm}^3$

$W_z = 0.1673 \text{ cm}^3$