

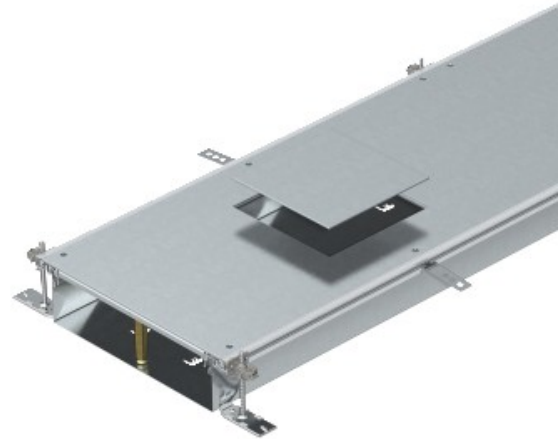


Electric Automation
Automation specialists

Reference: OKA-W40010050D4
Code: 7424622

Flushfloor trunking unit for service unit
GES19, 2400x400x100, Strip-galvanised,
DIN EN 10147, Steel, St

Buy it at [Electric Automation Network](#)



With screw-on device installation lids, each with an installation opening for an installation unit of nominal size 4.