

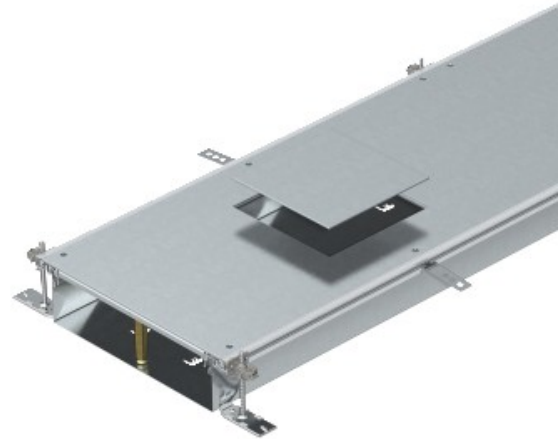


**Electric Automation**  
Automation specialists

Reference: OKA-W30010050D4  
Code: 7424620

Flushfloor trunking unit for service unit  
GES18, 2400x300x100, Strip-galvanised,  
DIN EN 10147, Steel, St

Buy it at [Electric Automation Network](#)



With screw-on device installation lids, each with an installation opening for an installation unit of nominal size 4.