

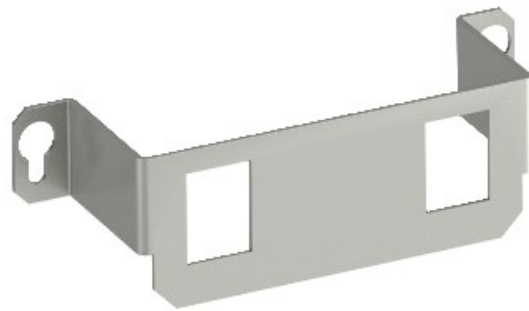


**Electric Automation**  
Automation specialists

Reference: MTGE2 2A  
Code: 7407846

Mounting plate with 3x hole pattern Type A, 116x36x34, Stainless steel, grade 304, VA, 1.4301

Buy it at [Electric Automation Network](#)



Mounting support to accept two data connection modules of the following types: AMP TYCO: Standard 110Connect, SL Series 110Connect and Toolless, AMP-Twist; Brand-Rex: unshielded; GG45; TKM RJ MOD; Nexans: LANmark with Adapter-Clip; Siemon CAT6; 3M K6 and K10.

Dimensions of a mounting opening in mm: 20.10 x 14.80.