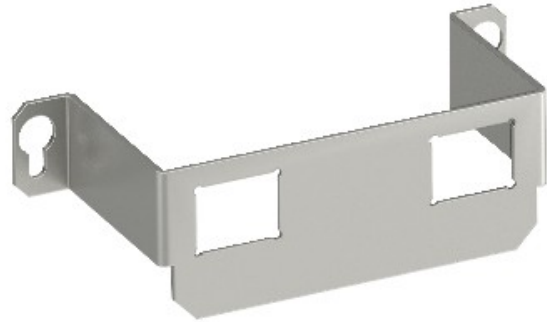




Reference: MTGE2 15 2C
Code: 7407596

Mounting plate for GE2 17 with 2x hole pattern Type C, 118x47x34, Stainless steel, grade 304, VA, 1.4301

[Buy it at Electric Automation Network](#)



Mounting support to accept two data connection modules of the following types:
Brand-Rex: shielded; EKU: E-Stone; Dätwyler: KS-T, MS-K and KU-T module; R&M: Snap-In and Keystone; Rutenbeck: UM and UMflex; SETEC: MKJ, UKJ and XKJ; Siemon TERA; Telegärtner: AMJ and UMJ.

Dimensions of a mounting opening in mm: 19.30 x 14.80.