

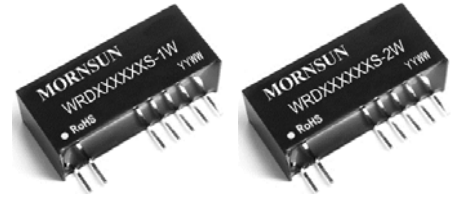
MORNSUN®



Automatización Eléctrica

Especialistas en Automatización

At the end of this document you will find links to products related to this catalog. You can go directly to our shop by clicking [HERE](#). [HERE](#)



WRD_S-1W & WRD_S-2W Series 1W & 2W, WIDE INPUT, ISOLATED & REGULATED TWIN OUTPUT DC-DC CONVERTER

Patent Protection RoHS

FEATURES

- 2:1 wide input voltage range
- Miniature SIP package
- Input-Output Isolation 1500VDC
Output-Output Isolation 1000VDC
- Short circuit protection
(automatic recovery)
- Internal SMD construction
- Operating temperature: -40°C to +85°C
- RoHS Compliance

APPLICATIONS

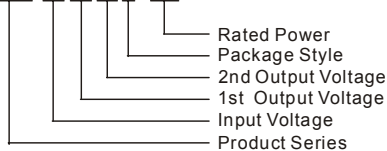
The WRD_S-1W & WRD_S-2W series are specially designed for applications where a wide range input voltage power supplies are isolated from the input power supply in a distributed power supply system on a circuit board.

These products apply to:

- 1) Where the voltage of the input power supply is wide range (voltage range $\leq 2:1$);
- 2) Where isolation is necessary between input and output (Isolation Voltage $\leq 1500\text{VDC}$);
- 3) Where isolation is necessary between Vout1 and Vout2 (Isolation Voltage $\leq 1000\text{VDC}$);
- 4) Where the regulation of the output voltage and the output ripple noise are demanded.

MODEL SELECTION

WRD050505S-1W



MORNSUN Science & Technology Co.,Ltd.

Address: No. 5, Kehui St. 1, Kehui development center, Science Ave., Guangzhou Science City, Luogang district, Guangzhou, P.R.China.

Tel: 86-20-38601850

Fax: 86-20-38601272

[Http://www.mornsun-power.com](http://www.mornsun-power.com)

PRODUCT PROGRAM

Part Number	Input			No-load (mA, Typ)	Output			Efficiency (% Min./Typ.)
	Voltage (VDC)				Voltage (VDC)	Current (mA)		
	Nominal	Range	Max.**			Max.	Min.	
WRD050505S-1W	5	4.5-9.0	11	40	5/5	100/100	10/10	68/70
WRD051515S-1W					15/15	33/33	3/3	70/72
WRD120505S-1W	12	9.0-18	22	20	5/5	100/100	10/10	68/70
WRD121212S-1W					12/12	42/42	4/4	72/74
WRD120505S-2W					5/5	200/200	20/20	71/73
WRD121212S-2W					12/12	83/83	8/8	76/78
WRD240505S-1W	24	18-36	40	10	5/5	100/100	10/10	69/71
WRD241212S-1W					12/12	42/42	4/4	76/78
WRD240505S-2W					5/5	200/200	20/20	74/76
WRD240512S-2W					5/12	200/83	20/8	77/79
WRD241205S-2W					12/5	83/200	8/20	77/79
WRD241212S-2W					12/12	83/83	8/8	77/79
WRD241515S-2W					15/15	67/67	6/6	78/80
WRD480505S-2W					48	36-72	80	5

Note: *Input voltage can't exceed this value, or will cause the permanent damage.

ISOLATION SPECIFICATIONS

Item	Test Conditions	Min.	Typ.	Max.	Units
Input-Output Isolation voltage	Tested for 1 minute and 1mA max	1500			VDC
Output-Output Isolation voltage	Tested for 1 minute and 1mA max	1000			
Isolation resistance	Test at 500VDC	1000			MΩ
Isolation capacitance	Input/Output, 100KHz/1V		80		pF

COMMON SPECIFICATIONS

Item	Test Conditions	Min	Typ.	Max	Units
Storage humidity				95	%
Operating temperature		-40		85	°C
Storage temperature		-55		125	
Lead temperature	1.5mm from case for 10 seconds			300	
No-load power consumption			0.1		W
Cooling		Free Air Convection			
Short circuit protection		Continuous			
Case material		Plastic(UL94-V0)			
MTBF		1000			K hours
Weight			5.8		g

OUTPUT SPECIFICATIONS

Item	Test Conditions	Min.	Typ.	Max.	Units
Main output voltage accuracy	Refer to recommended circuit		±1	±3	
Vice output voltage accuracy	Refer to recommended circuit		±3	±5	
Load regulation	10% to 100% load		±0.5	±1*	%
Line regulation	Input voltage from low to high		±0.2	±0.5	
Temperature drift (Vout)	Refer to recommended circuit			±0.03	%/°C
Ripple & Noise**	20MHz Bandwidth		50	100	mVp-p
Switching frequency	100% load, input voltage range		300		kHz

Note: 1.*Dual output models unbalanced load: $\leq \pm 5\%$.
 2.**Test ripple and noise by "parallel cable" method. See detailed operation instructions at Testing of Power Converter section, application notes.

APPLICATION NOTE

1) CS Pin

By connecting a low ESR capacitor between this terminal and the pin-7(Figure 1), the output ripple and noise may be further improved. Generally, the capacitance is no greater than 47uF.

2) Requirement on Output Load

To ensure this module can operate efficiently and reliably, During operation, the minimum output load is not less than 10% of the full load, If the actual load is less than the specific minimum load, the output ripple may increase sharply. If the actual output power is very small, please add an appropriate resistor as extra loading, or contact our company for other lower output power products.

3) Recommended Circuit

If you want to further decrease the input/output ripple, you can increase capacitance properly or choose capacitors with low ESR (Figure 1).

However, the capacitance of the output filter capacitor must be proper. If the capacitance is too big, a startup problem might arise. For every channel of output, provided the safe and reliable operation is ensured, the greatest capacitance of its filter capacitor sees (Table 1)

Cin: 5V & 12V 100μF
 24V&48V 10μF-47μF

Lin: 10μH-120μH

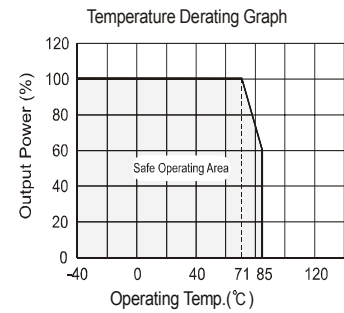
Cout: 100μF(TYP)

4) Input current

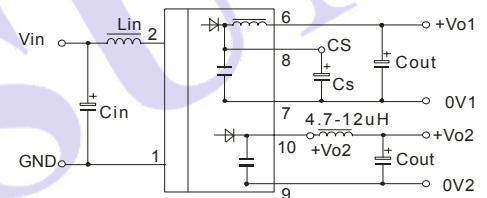
While using unstable power source, please ensure the output voltage and ripple voltage do not exceed indexes of the converter. The preceding power source must be able to provide for converter sufficient starting current lobe (Figure 2).

General: 1W Vin=5V lobe =458mA
 Vin=12V lobe =229mA
 Vin=24V lobe =113mA
 2W Vin=12V lobe =439mA
 Vin=24V lobe =211mA
 Vin=48V lobe =107mA

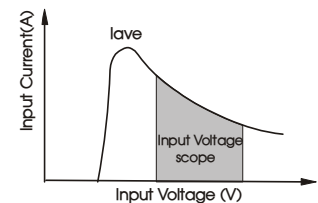
TYPICAL TEMPERATURE CURVE



RECOMMENDED CIRCUIT



(Figure 1)

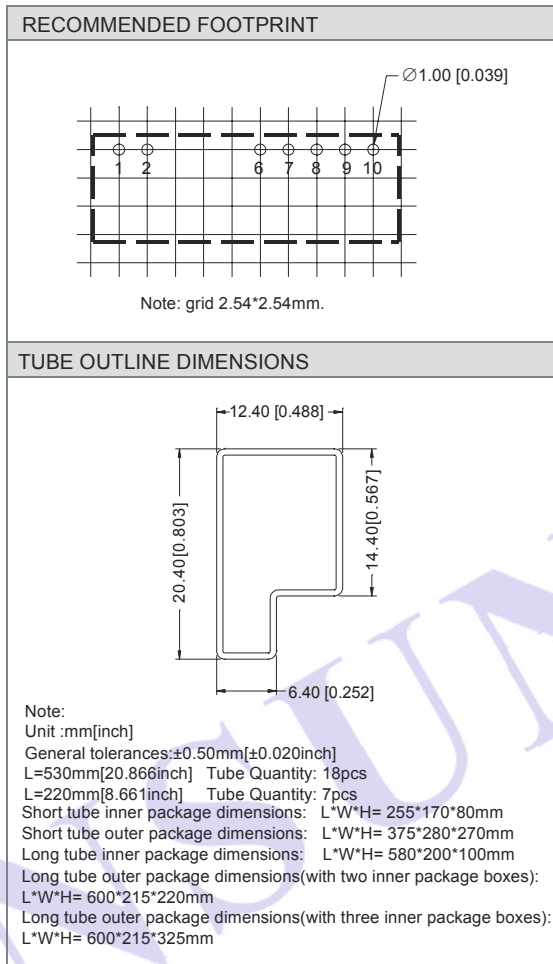
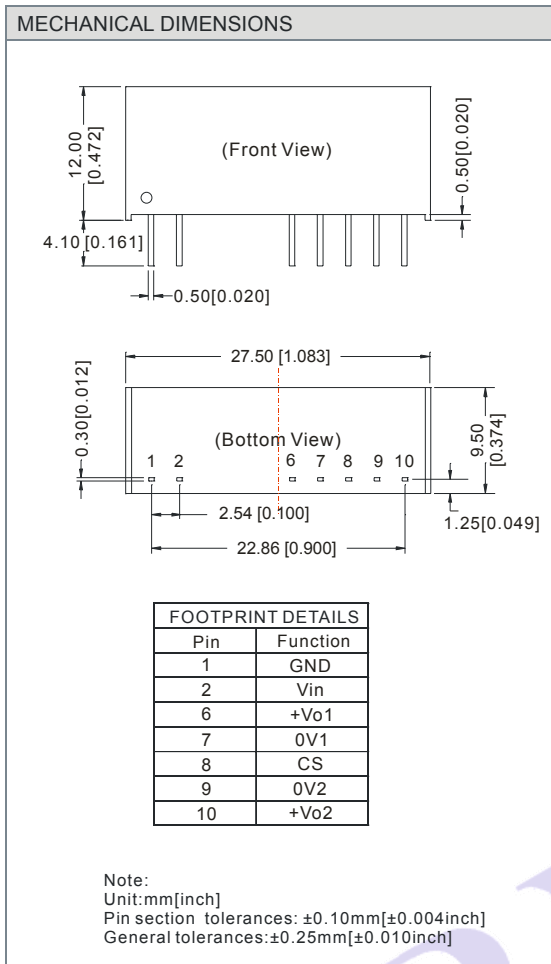


(Figure 2)

External Capacitor Table (Table 1)

Vout(VDC)	2W:Cout(uF)	1W:Cout(uF)
5	680	470
12	330	220
15	220	100

OUTLINE DIMENSIONS & FOOTPRINT DETAILS



Note:

- 1.Packing Information please refer to 'Product Packing Information'. The Packing bag number of Horizontal package : 58200015;
- 2.Recommend to use module with more than 10% load, if not, the ripple of the product may exceeds the specification, but does not affect the reliability of the product;
- 3.Operation under 10% load will not damage the converter; However, they may not meet all specification listed.
- 4.All specifications measured at Ta=25°C, humidity<75%, nominal input voltage and rated output load unless otherwise specified.
- 5.In this datasheet, all the test methods of indications are based on corporate standards.
- 6.Only typical models listed, other models may be different, please contact our technical person for more details.

Below is a list of articles with direct links to our shop Electric Automation Network where you can see:

- Quote per purchase volume in real time.
- Online documentation and datasheets of all products.
- Estimated delivery time enquiry in real time.
- Logistics systems for the shipment of materials almost anywhere in the world.
- Purchasing management, order record and tracking of shipments.

To access the product, [click on the green button.](#)

Product	Code	Reference	Product link
Converter DC/DC Wide Input Range 2:1, Isolated, Regulated Output, 2W, 4 Outputs, Format 1500, SIP Vac	WRD240505S2W	WRD240505S-2W	Buy on EAN
Converter DC/DC, Fixed Entry, Isolated, Unregulated Output, 1W, 2 Outputs, Format 1000, SIP Vac	D051515S1W	D051515S-1W	Buy on EAN
Converter DC/DC, Fixed Entry, Isolated, Unregulated Output, 1W, 2 Outputs, Format 1000, SIP Vac	D121212S1W	D121212S-1W	Buy on EAN
Converter DC/DC Wide Input Range 2:1, Isolated, Regulated Output, 1W, 4 Outputs, Format 1500, SIP Vac	WRD051515S1W	WRD051515S-1W	Buy on EAN
Converter DC/DC Wide Input Range 2:1, Isolated, Regulated Output, 2W, 4 Outputs, Format 1500, SIP Vac	WRD480505S2W	WRD480505S-2W	Buy on EAN
Converter DC/DC Wide Input Range 2:1, Isolated, Regulated Output, 1W, 4 Outputs, Format 1500, SIP Vac	WRD050505S1W	WRD050505S-1W	Buy on EAN
Converter DC/DC Wide Input Range 2:1, Isolated, Regulated Output, 1W, 4 Outputs, Format 1500, SIP Vac	WRD120505S1W	WRD120505S-1W	Buy on EAN
Converter DC/DC Wide Input Range 2:1, Isolated, Regulated Output, 1W, 4 Outputs, Format 1500, SIP Vac	WRD241212S1W	WRD241212S-1W	Buy on EAN
Converter DC/DC Wide Input Range 2:1, Isolated, Regulated Output, 2W, 4 Outputs, Format 1500, SIP Vac	WRD120505S2W	WRD120505S-2W	Buy on EAN
Converter DC/DC, Fixed Entry, Isolated, Unregulated Output, 2W, 1 Outputs, Format 1000, SIP Vac	D241515S2W	D241515S-2W	Buy on EAN

Converter DC/DC Wide Input Range 2:1, Isolated, Regulated Output, 2W, 4 Outputs, Format 1500, SIP Vac	WRD241515S2W	WRD241515S-2W	Buy on EAN
Converter DC/DC Wide Input Range 2:1, Isolated, Regulated Output, 2W, 4 Outputs, Format 1500, SIP Vac	WRD241212S2W	WRD241212S-2W	Buy on EAN
Converter DC/DC, Fixed Entry, Isolated, Unregulated Output, 1W, 2 Outputs, Format 1000, SIP Vac	D240505S1W	D240505S-1W	Buy on EAN
Converter DC/DC Wide Input Range 2:1, Isolated, Regulated Output, 2W, 4 Outputs, Format 1500, SIP Vac	WRD241205S2W	WRD241205S-2W	Buy on EAN
Converter DC/DC Wide Input Range 2:1, Isolated, Regulated Output, 2W, 4 Outputs, Format 1500, SIP Vac	WRD240512S2W	WRD240512S-2W	Buy on EAN
Converter DC/DC, Fixed Entry, Isolated, Unregulated Output, 1W, 2 Outputs, Format 1000, SIP Vac	D120505S1W	D120505S-1W	Buy on EAN
Converter DC/DC Wide Input Range 2:1, Isolated, Regulated Output, 2W, 4 Outputs, Format 1500, SIP Vac	WRD121212S2W	WRD121212S-2W	Buy on EAN
Converter DC/DC Wide Input Range 2:1, Isolated, Regulated Output, 1W, 4 Outputs, Format 1500, SIP Vac	WRD121212S1W	WRD121212S-1W	Buy on EAN
Converter DC/DC Wide Input Range 2:1, Isolated, Regulated Output, 1W, 4 Outputs, Format 1500, SIP Vac	WRD240505S1W	WRD240505S-1W	Buy on EAN