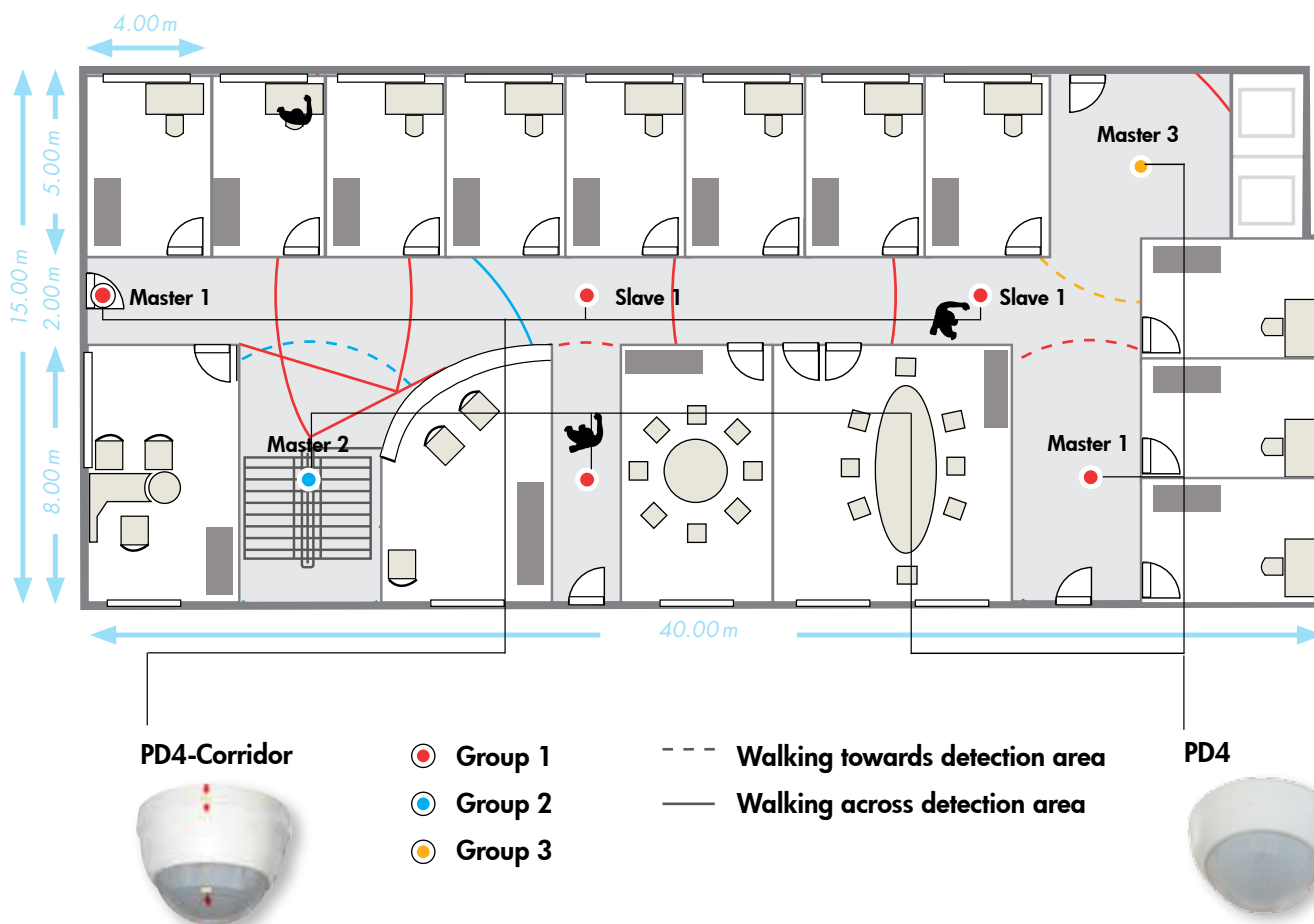


# APPLICATION EXAMPLE 3: CORRIDOR WITH PD4-MASTER-2C-C (CORRIDOR) AND PD4-MASTER-2C



Description	Colour	Page	Part number
PD4-M-2C-C-SM	white	56	92440
PD4-M-2C-C-FC	white	56	92143
PD4-M-2C-C-FM	white	56	92443
PD4-S-C-SM	white	84	92442
PD4-S-C-FC	white	84	92444
PD4-S-C-FM	white	84	92445
PD4-M-2C-SM	white	55	92140
PD4-M-2C-FC	white	55	92148
PD4-M-2C-FM	white	55	92255

## Application description:

Corridor in an office level with three lighting groups: lobby to the passenger lifts (red), corridor area (yellow), staircase area (blue)

## Note:

Pay special attention to the access areas to ensure "Dead zones" are prevented in the corridor. Increase the switch-off delay time if necessary. When being directly (radially) approached, it is critical to take the detector range specifications specially indicated in the catalogue into consideration for "frontal approach (radial approach)", 10m radius for the corridor occupancy detector. The large frontal sensitivity is available in the corridor axis only (180°). Across applies the sensitivity of the standard PD4.

## Building information:

Type: corridor without daylight  
Room height: 2.70 m

## Illumination:

Three separate lighting groups with electronic ballasts

## Products shown:

- 1 each LUXOMAT® PD4-Master-C (corridor occupancy detector)
- 2 each LUXOMAT® PD4-Slave-C (corridor occupancy detector)
- 4 each LUXOMAT® PD4-Master-SM/FM/FC

## PD4 device settings:

Switch-off delay time: approx. 5 min.  
Brightness: day/night ("sun" symbol)

## Connected circuit:

- Master/Slave operation in corridor area
- Standard operation in lift room and staircase area

