

# COVER AND BLINDS FOR RESTRICTING THE DETECTION AREA FOR **B.E.G.** OCCUPANCY DETECTORS

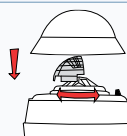
- Blinds ensure that the detectors' detection area is adapted to the local circumstances. Sources of interference or unwanted areas can be eliminated from the area subject to motion detection. Blinds are included with the product. More can be ordered, if needed.

## Blinds for **B.E.G.** occupancy detectors

### ■ LUXOMAT® PD2, PD4 – SM-version – Part nr. 92260



The blinds have nominal breaks at regular distances. The detection area can therefore be accurately adapted to your needs.



Example PD4-SM



PD4-SM with blinds

### ■ LUXOMAT® PD4 – FC- and FM-version – Part nr. 32701



The blinds have nominal breaks at regular distances. The detection area can therefore be accurately adapted to your needs.

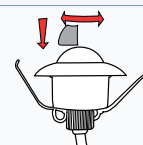


Example PD4-FM



PD4-FM with blinds

### ■ LUXOMAT® Mini motion detector PD9 – Part nr. 32702

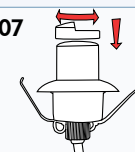


PD9-FC



PD9-FC with blinds

### ■ LUXOMAT® Mini motion detector PD9-GH for great heights – Part nr. 33207



PD9-GH-FC



PD9-GH-FC with blind

### ■ Installation note - Arc extinction kit

- In some cases of switching inductive loads e.g. relays, rockerswitches, fluorescent lamps, transformers etc, the motion detector may be retriggered again due to the high inductive voltage. In those cases the above kit is recommended to be switched parallel to the load i.e. between L' and Neutral.
- Wiring diagrams on page 143!

## Arc extinction kit for **B.E.G.** occupancy detectors

### ■ LUXOMAT® Arc extinction kit – Part nr. 10880



L 62 x W 39 x H 24 mm

### ■ LUXOMAT® Mini-Arc extinction kit – Part nr. 10882



L 50 x W 22 x H 10 mm

#### Suitable for all motion and occupancy detectors

- For protection of inductive circuits to 230V~, e.g. contactors, fluorescent lamps and transformers, when the induction voltage of these devices leads to reswitch-on (measures).
- The arc extinction kit should preferably be used in the causes close to the voltage peak, ie of the connected load.