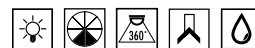


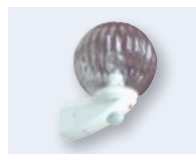
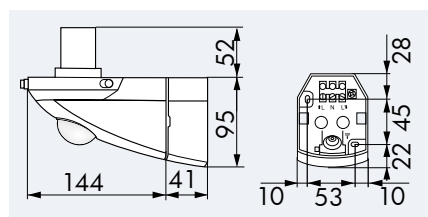
LUXOMAT® ALC-B-360



black with globe Oslo



white

ALC-K-360 white
As a special offerALC-K-360 black
As a special offer

TECHNICAL DATA

- 230 V ~ ±10%
- 120°
- max. 10 m by walking across (tangential)
- IP44 / Class II / CEE
- L 185 x W 107 x H 147 mm
- 25°C to +50°C
- made of high-quality and UV-resistant polycarbonate

Lamps

- max. 100 W – conventional lamp or E27 energy-saving lamp

Channel 1 (light control)

- 1000 W, cos φ = 1
- 4 sec. - 10 min.
- 2 - 2000 Lux

System shades (see page 22)

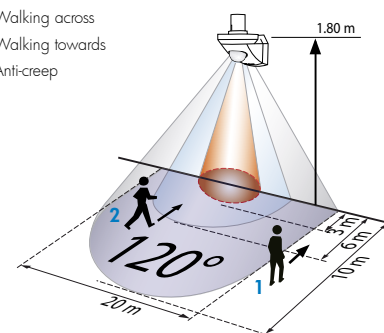


PRODUCT INFORMATION

- System light lower sections LUXOMAT® ALC-B-360 SLS with motion detector and twilight switch, suitable for conventional lamps
- Freely combinable with 17 different System-Globes SG – see below!
- Vertical detection range 360° and horizontal detection range 120°
- Wall or outer corner installation
- Time-saving single-handed plug-in base installation
- Possible to connect additional lights switched in precisely the same way as the master light
- **Application examples:** entrances, garages, patios, balconies, at entrance gates

▶ Wiring diagrams on page 79, 80!

- 1 Walking across
- 2 Walking towards
- Anti-creep



ACCESSORY (OPTIONAL)

ALC-ES corner base for outer corner installation



white



black

Replacement globe ALC-K



transparent

Energy and environment balance sheet see page 15

Description	Colour	Part number
ALC-B-360 SLS with motion detector	white	91301
ALC-B-360 SLS with motion detector	black	91321
ALC-K-360 Incl. crystal glass (special offer)	white	91306
ALC-K-360 Incl. crystal glass (special offer)	black	91326
Accessory (optional)		
ALC-ES corner base	white	91305
ALC-ES corner base	black	91325
Replacement globe für ALC-K	transparent	94115