



Automatización Eléctrica
Especialistas en Automatización

At the end of this document you will find links to products related to this catalog. You can go directly to our shop by clicking [HERE](#)

General Information

Extended Product Type:	RGW25-M6-V0
Product ID:	1SNA510006R0000
EAN:	3472595100064
Catalog Description:	RGW25-M6-V0 Ring lug Terminal block - Feed-through - Grey
Long Description:	RGW25-M6-V0 Ring lug Terminal block - Feed-through - Grey - 25mm ² RatedCrossSection - 18mm Spacing.

Categories

Products » Low Voltage Products and Systems » Connection Devices » Terminal Blocks » Solution Series

Ordering

Minimum Order Quantity:	10 piece
Customs Tariff Number:	85369010
EAN:	3472595100064

Dimensions

Product Net Height:	60 mm
Product Net Depth:	63 mm
Product Net Weight:	48.44 g
Product Net Width:	18 mm

Container Information

Package Level 1 Width:	95 mm
Package Level 1 Length:	86 mm
Package Level 1 Height:	145 mm
Package Level 1 Gross Weight:	0.494 kg
Package Level 1 EAN:	3472595100064
Package Level 2 Units:	240 piece
Package Level 2 Width:	300 mm
Package Level 2 Length:	400 mm
Package Level 2 Height:	300 mm
Product Packing Type:	Box
Package Level 1 Units:	10 piece

Technical

Spacing:	18 mm
Function:	Feed-through
Number of Levels:	1
Connecting Capacity-Main Circuit:	Stud / Flexible 1x 0.1 ... 25 mm ² Stud / Rigid 1x 0.1 ... 25 mm ²
Rated Current (I _n):	Main Circuit 101 A
Rated Short-time Withstand Current (I _{cw}):	for 1 s 3000 A
Rated Voltage (U _r):	800 V
Rated Impulse Withstand Voltage (U _{imp}):	8000 V
Power Loss:	3.2 W
Degree of Protection:	acc. to IEC 60529, IEC 60947-1, EN 60529 Main Terminals IP10
Insulation Material:	Polyamide
Mounting on DIN Rail:	G32 (32 x 15 mm Mounting Rail) acc. to IEC 60715 TH35-7.5 (35 x 7.5 mm Mounting Rail) acc. to IEC 60715 TH35-15 (35 x 15 mm Mounting Rail) acc. to IEC 60715
Tightening Torque:	Cable Lug 3.5 N·m
Rated Cross-Section:	25 mm ²

Technical UL/CSA

Connecting Capacity Main Circuit UL/CSA:	Stud / Rigid 1x 26 ... 4 AWG
Connecting Capacity UL/CSA:	Stranded 4 AWG
Flammability According to UL94:	V0
Maximum Operating Voltage	Main Circuit 600 V

UL/CSA:

Environmental

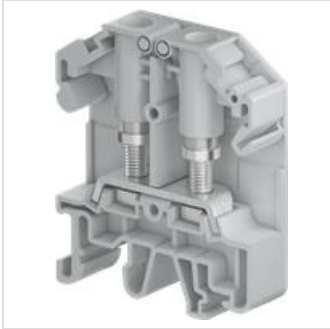
RoHS Status:	Following EU Directive 2011/65/EC
Ambient Air Temperature:	Operation -40 ... +100 °C Storage -40 ... +100 °C

Certificates and Declarations (Document Number)

CSA Certificate:	1SND168002A0201
cUL Certificate:	1SND168001A0202
Declaration of Conformity - CE:	1SND225158C1001
RoHS Information:	1SND230545F0201

Classifications

ETIM 4:	EC000897 - Feed-through terminal block
ETIM 5:	EC000897 - Feed-through terminal block



Below is a list of articles with direct links to our shop Electric Automation Network where you can see:

- Quote per purchase volume in real time.
- Online documentation and datasheets of all products.
- Estimated delivery time enquiry in real time.
- Logistics systems for the shipment of materials almost anywhere in the world.
- Purchasing management, order record and tracking of shipments.

To access the product, [click on the green button.](#)

Product	Code	Reference	Product link
RGW25-M6-V0 Ring lug Terminal block - Feed-through - Grey	1SNA510006R0000	RGW25-M6-V0	Buy on EAN