



Automatización Eléctrica

Especialistas en Automatización

At the end of this document you will find links to products related to this catalog. You can go directly to our shop by clicking HERE. [HERE](#)

Safety isolating transformer VC 16/2/9



Picture shows VC 16/2/18

Advantages

Minimum size at high output

Also with dual output voltage for series or parallel connection

Permanent corrosion protection, high insulation value and maximum electrical reliability thanks to XtraDenseFill resin encapsulation

Coil shell in 2-chamber technology

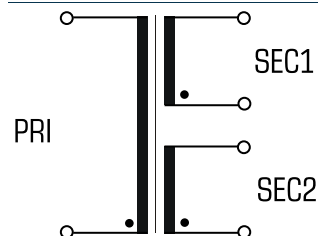
Self-extinguishing potting material

Applications

As a mains transformer for adjustment of the voltage and simple electrical isolation.

As a safety transformer for the safe electrical isolation of the input and output sides. The transformer is suitable for creating SELV and PELV circuits because of the limit on the output voltage.

Sample application



Standards

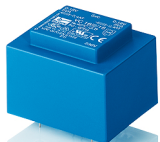


Safety isolating transformer
to: VDE 0570 Part 2-6, DIN EN 61558-2-6, EN 61558-2-6, IEC 61558-2-6,
UL 5085-1/-2, CSA 22.2 No.66

Approvals



ENEC 10 (VDE), UL 5085-1/-2, CSA 22.2 No.66



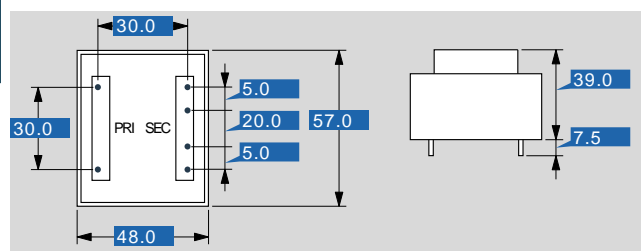
Safety isolating transformer VC 16/2/9

Electrical data

Type	VC 16/2/9
Input	
Rated input voltage	230 Vac
Rated frequency	50 - 60 Hz
Output	
Rated output voltage	2 x 9 Vac
Rated Power	16.0 VA
No-load voltage (app. x factor)	1.24
No-load loss (typ.)	1.80 W
Efficiency	76 %
Standards	
Classification	Safety isolating transformer
Approvals	
Approvals	cURus, ENEC (VDE)
Environment	
Ambient temperature max.	40 °C
Safety and protection	
Type	Encapsulated
Class of Insulation System	VDE=B, UL=class 105
Protection index	IP 00
Safety class (prepared)	II
Short circuit strength	non-short-circuit proof
Order numbers	
Order Number	VC 16/2/9

Mechanical data

Type	VC 16/2/9
Terminal and mounting	
Terminals	Pins for printed circuit boards
Measures and weights	
Pin (ø)	0.8 mm
Core type	EI 54/18,8
Weight	0.42 kg





Automatización Eléctrica
Especialistas en Automatización

Below is a list of articles with direct links to our shop Electric Automation Network where you can see:

- Quote per purchase volume in real time.
- Online documentation and datasheets of all products.
- Estimated delivery time enquiry in real time.
- Logistics systems for the shipment of materials almost anywhere in the world.
- Purchasing management, order record and tracking of shipments.

To access the product, [click on the green button](#).

Product	Code	Reference	Product link
PCB transformer encapsulated, PRI 230 Vac, SEC 3.2 - 16 VA, 6 - 24 Vac, 2 x 6 - 2 x 24 Vac	VC1629	VC 16/2/9	Buy on EAN