



**Automatización Eléctrica**

Especialistas en Automatización

At the end of this document you will find links to products related to this catalog. You can go directly to our shop by clicking [HERE](#). [HERE](#)

# Variable transformer ESS 110



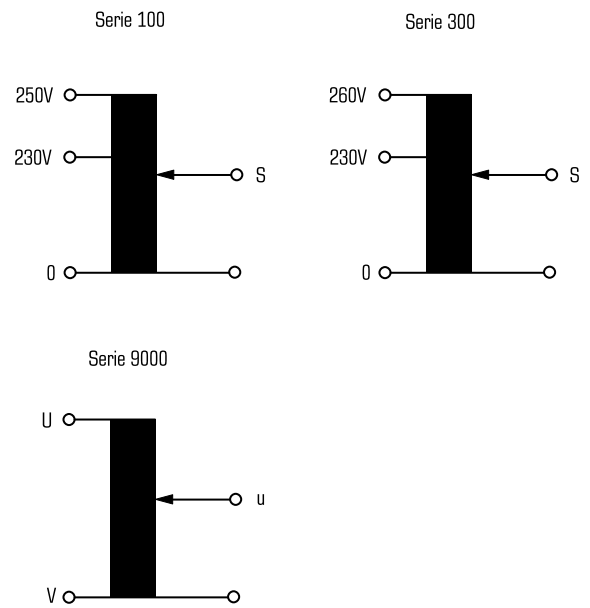
## Advantages

- Stepless adjustment of the AC voltage from zero to the maximum value
- Self-cleaning of the exposed contact tracks
- 4-point flange mounting
- Rotary knobs and scales optionally available

## Applications

Variable auto transformer for continuous adjustment of AC voltages or currents under load.

## Sample application

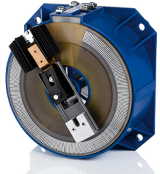


## Standards



Variable transformer  
to: VDE 0552

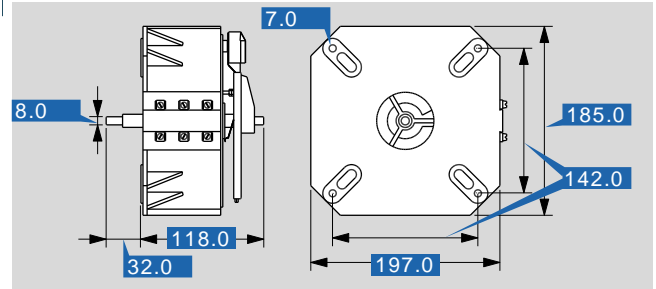
## Approvals



## Variable transformer ESS 110

| Type                         |                          | ESS 110         |
|------------------------------|--------------------------|-----------------|
| Electrical data              | Input                    |                 |
|                              | Rated frequency          | 50 - 60 Hz      |
|                              | Rated input voltage      | 230 Vac         |
|                              | Output                   |                 |
|                              | Angle of rotation        | 320 °           |
|                              | Rated output voltage     | 0...230/250 Vac |
|                              | Rated output current     | 10.00 A         |
|                              | Environment              |                 |
|                              | Ambient temperature max. | 45 °C           |
|                              | Safety and protection    |                 |
| Class of Insulation System   | B                        |                 |
| Protection index             | IP 00                    |                 |
| Test voltage control spindle | 4 kV                     |                 |
| Order numbers                |                          |                 |
| Order Number                 |                          | ESS 110         |

| Type            |                        | ESS 110                     |
|-----------------|------------------------|-----------------------------|
| Mechanical data | Terminal and mounting  |                             |
|                 | Fixing method          | 4-point bolted flange joint |
|                 | Terminals              | Screw-type terminals        |
|                 | Measures and weights   |                             |
|                 | Weight                 | 7.80 kg                     |
|                 | Accessory              |                             |
|                 | Rotary knob (optional) | 50/8-1                      |
|                 | Scale (optional)       | SK/120                      |



Subjects to change.



Below is a list of articles with direct links to our shop Electric Automation Network where you can see:

- Quote per purchase volume in real time.
- Online documentation and datasheets of all products.
- Estimated delivery time enquiry in real time.
- Logistics systems for the shipment of materials almost anywhere in the world.
- Purchasing management, order record and tracking of shipments.

To access the product, [click on the green button](#).

| Product                                                                             | Code   | Reference | Product link               |
|-------------------------------------------------------------------------------------|--------|-----------|----------------------------|
| Variable transformer PRI 230 Vac, SEC 0.8 - 20 A, 0...230/250 Vac - 0...230/260 Vac | ESS110 | ESS 110   | <a href="#">Buy on EAN</a> |